

**FOR CASA APPROVED  
OPERATORS ONLY  
USE QNH**

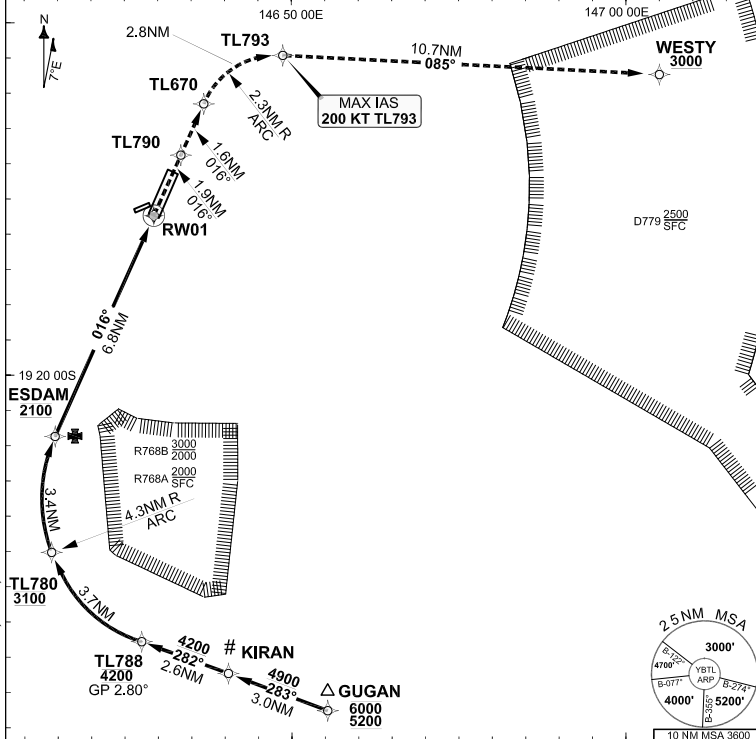
RNAV-P (RNP) RWY 01

**9 SEP 2021**

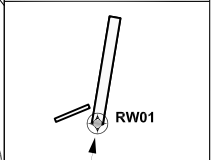
**TOWNSVILLE/TOWNSVILLE INTL, QLD (YBTL)**

GE PROPRIETARY INFORMATION

|                 |       |             |       |                    |                                 |       |                         |   |
|-----------------|-------|-------------|-------|--------------------|---------------------------------|-------|-------------------------|---|
| ATIS            | APP   | SMC         | TWR   | FIA (AH)<br>BN CEN | CTAF+AFRU (AH)<br>AFRU+PAL (AH) | AWIS  | RNV P 01<br>THR ELEV 18 | <ul style="list-style-type: none"> <li>RF RQ</li> <li>YBTL ACT QNH RQ</li> <li>YBTL ACT TEMP RQ</li> <li>APPROACH NA BELOW +7.0°C OR ABOVE +70°C</li> </ul> |
| 114.1 133.5 276 | 126.8 | 121.8 264.6 | 118.3 | 120.55             | 118.3                           | 133.5 |                         |   |

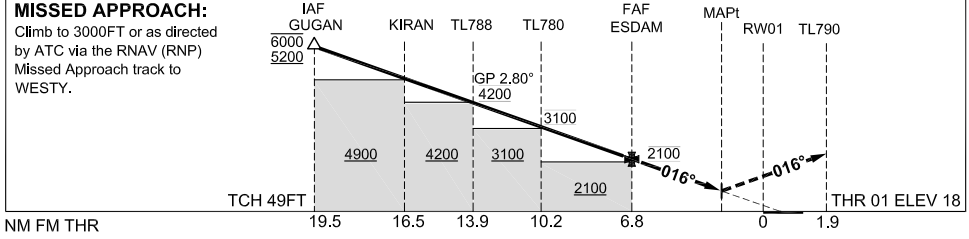


| TR | INTURN | TIME | MIN<br>ALT | DME<br>LMT |
|----|--------|------|------------|------------|
|    |        |      |            |            |



**AD ELEV 18**  
Bearings are Magnetic  
Elevations in FEET AMSL

|                       |       |       |       |       |       |  |
|-----------------------|-------|-------|-------|-------|-------|--|
|                       | GUGAN | KIRAN | TL788 | TL780 | ESDAM |  |
| ALT (2.80° APCH PATH) | 5868  | 4976  | 4200  | 3100  | 2100  |  |



**NOTES**

- Lateral transition to MAP must not be initiated prior to DA/H POSN.
- RNP 0.30 Required from IAF.
- RNP 0.50 from RWY01 to TL790
- \*4. RNP 0.10 Minimum MAP gradient 4.8% to 1600 FT Required for Obstacle Clearance.
- #5. Latest Intercept Point (LIP)

| CATEGORY                  | A   | B | C                          | D                          |
|---------------------------|-----|---|----------------------------|----------------------------|
| RNP (0.30)                |     |   | DA(H) <b>994</b> (976-5.6) | DA(H) <b>994</b> (976-5.6) |
| RNP (0.10)*<br>(4.8% MAP) |     |   | DA(H) <b>368</b> (350-2.0) | DA(H) <b>368</b> (350-2.0) |
| CIRCLING                  | N/A |   | NOT AUTHORISED             | NOT AUTHORISED             |
| ALTERNATE                 |     |   |                            |                            |

Changes: From SUP H38/21.

BTLGN06-168

Prepared by GE Aviation - ICAO Doc 9905 Compliant

**DO NOT USE FOR NAVIGATION**

© Airservices Australia 2021

