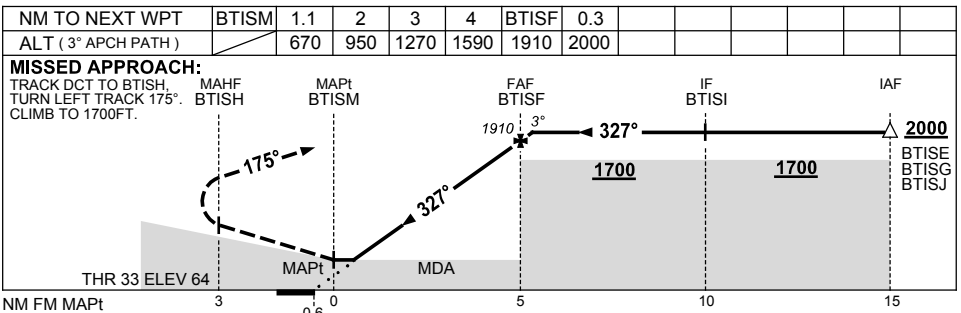
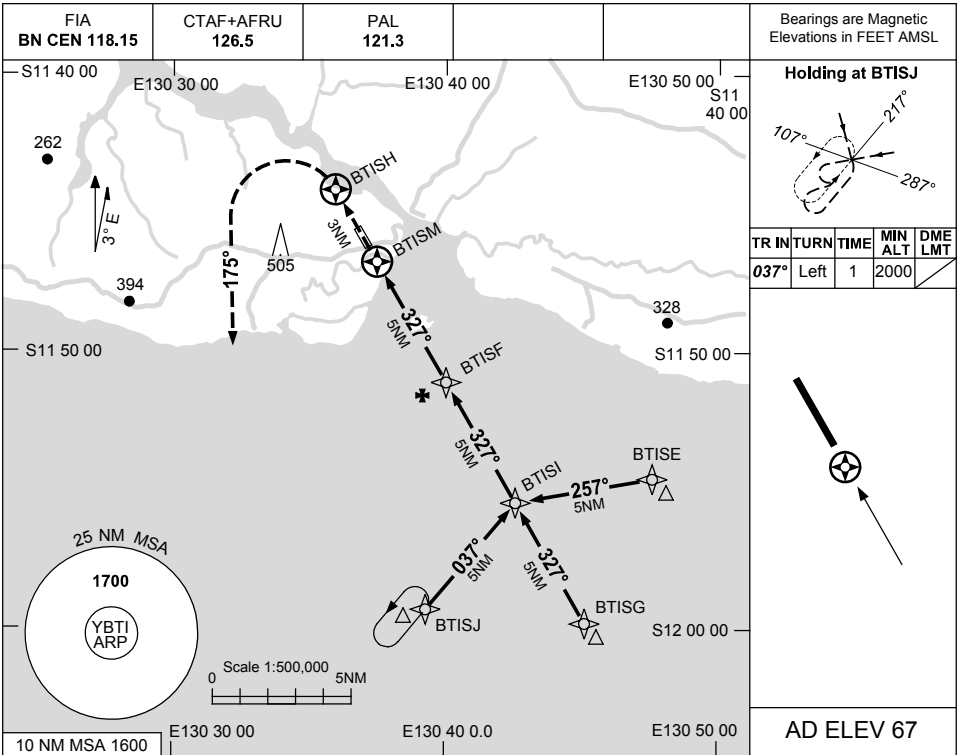


USE QNH

RNAV_(GNSS) RWY 33

BATHURST ISLAND, NT (YBTI)

1 MAR 2018



NOTES

1. MAX IAS:
INITIAL : 210KT.

CATEGORY	A	B	C	D
LNAV	670 (603-3.4)			NOT APPLICABLE
CIRCLING	790 (723-2.4)		1000 (933-4.0)	
ALTERNATE	(1223-4.4)		(1433-6.0)	

Changes: CTAF+AFRU.

BTIGN02-154