

**STANDARD INSTRUMENT ARRIVAL (STAR)  
REBEG TWO X-RAY ARRIVAL (RNAV)  
SUNSHINE COAST, QLD (YBSU)**

**16 JUN 2022**

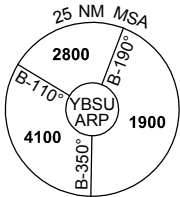
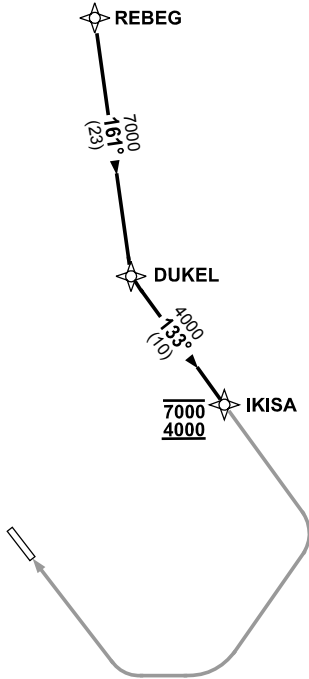
ATIS/AWIS (AH) <b>114.2/119.8</b>	SMC <b>121.1</b>	TWR <b>124.4</b>	FIA <b>BN CEN 129.0 (CCT AREA) BN CEN 135.2 (ON GROUND AH)</b>	CTAF+AFRU (AH) <b>124.4</b>	AFRU+PAL <b>124.4</b>	Bearings are Magnetic Elevations in FEET AMSL
--------------------------------------	---------------------	---------------------	---	--------------------------------	--------------------------	--

NOT TO SCALE



**CLASS D SPEED  
LIMITS APPLY**

**RNP 1**



10 NM MSA 2700

**ARRIVAL: REBEG TWO X-RAY**

**RWY 31:**

- From REBEG track 161° to DUKEL
- Turn LEFT, track 133° to IKISA
- **Cross IKISA BTN 4000FT and 7000FT**
- Track via RNP X RWY 31 (AR)

**COMMUNICATIONS FAILURE: PROCEDURE IN IMC**

- Squawk 7600, comply with vertical navigation requirements, but not below MSA.
- Track via the latest STAR clearance to the nominated runway, then fly the most suitable approach in accordance with ERSA EMERG Section 1.5.

Changes: PROC NUMBER.

BSUSR02-171