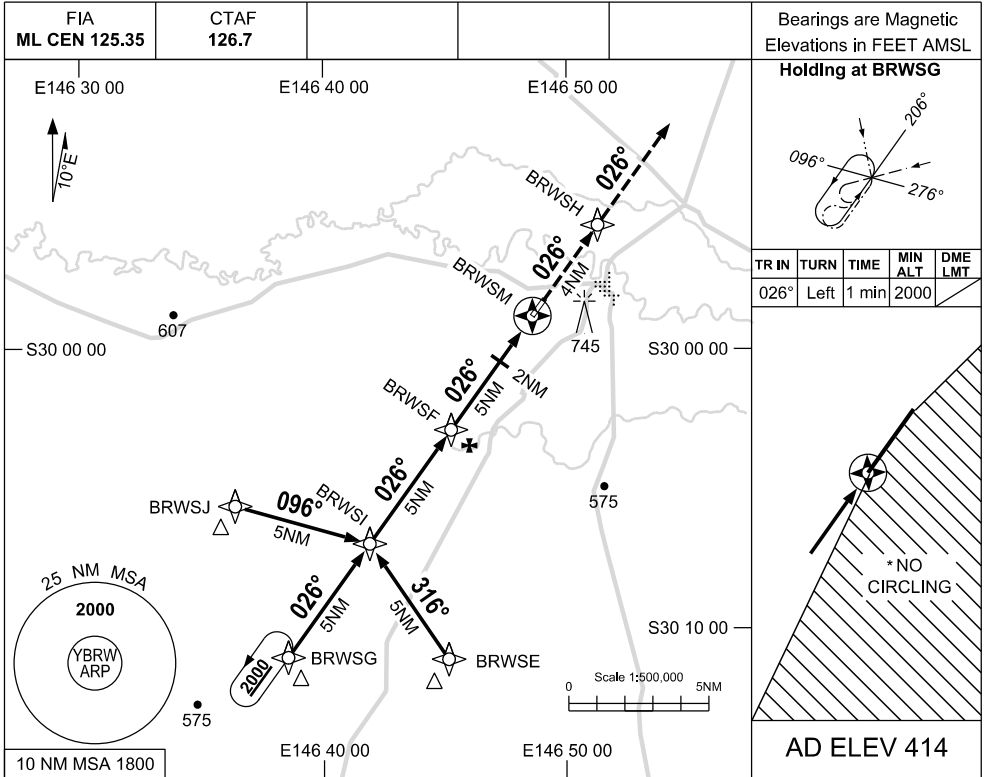
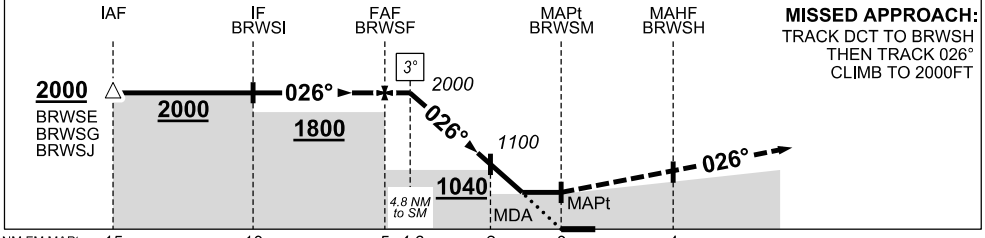


20 AUG 2015

BREWARRINA, NSW (YBRW)



NM TO NEXT WPT	4.8	4	3	2.1	2	1.8	BRWSM			
ALT (3° APCH PATH)	2000	1740	1420	1140	1100	1040				



Gnd Speed (KTS)	60	70	80	90	100	120	140	160
Desc Rate (fpm) (3°)	320	370	420	480	530	640	740	850

CATEGORY	A	B	C	D
CIRCLING*	1040 (627-2.4)		1140 (726-4.0)	
ALTERNATE	(1126-4.4)		(1226-6.0)	

- NOTES**
- MAX IAS: INITIAL 210 KTS
 - NO CIRCLING EAST OF RWY 03/21
 - TAF NAVBL. REFER AIP ENR 1.5 PARA 5.3.4

Changes: New procedure

BRWGN02-144

