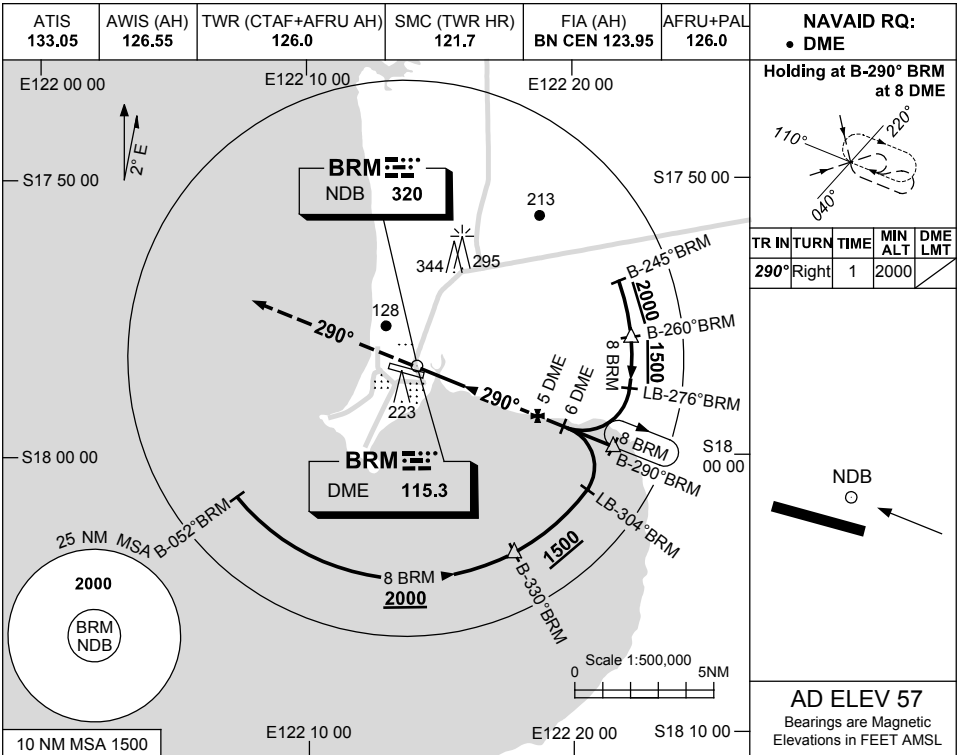


USE QNH

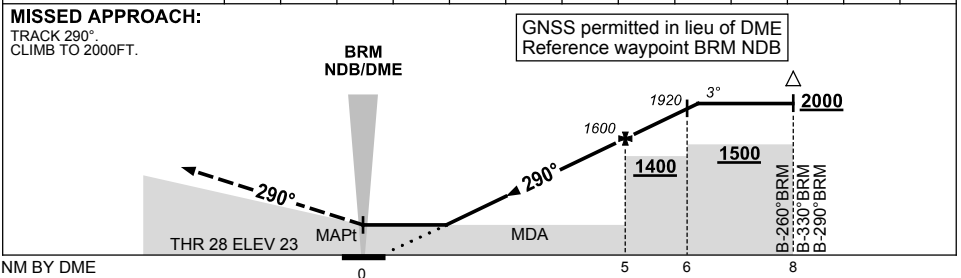
NDB-Z RWY 28

BROOME, WA (YBRM)

1 MAR 2018



DIST BY DME	1.9	2	3	4	5	6	6.2						
ALT (3° APCH PATH)	600	650	970	1290	1600	1920	2000						



NOTES

CATEGORY	A	B	C	D
S-I NDB/DME	600 (577-3.3)			
CIRCLING	650 (593-2.4)		840 (783-4.0)	
ALTERNATE	(1093-4.4)		(1293-7.0)	

1. HOLDING NOT CONTAINED IN CTA.

Changes: DIST/ALT TABLE, Editorial.

BRMNB02-154