

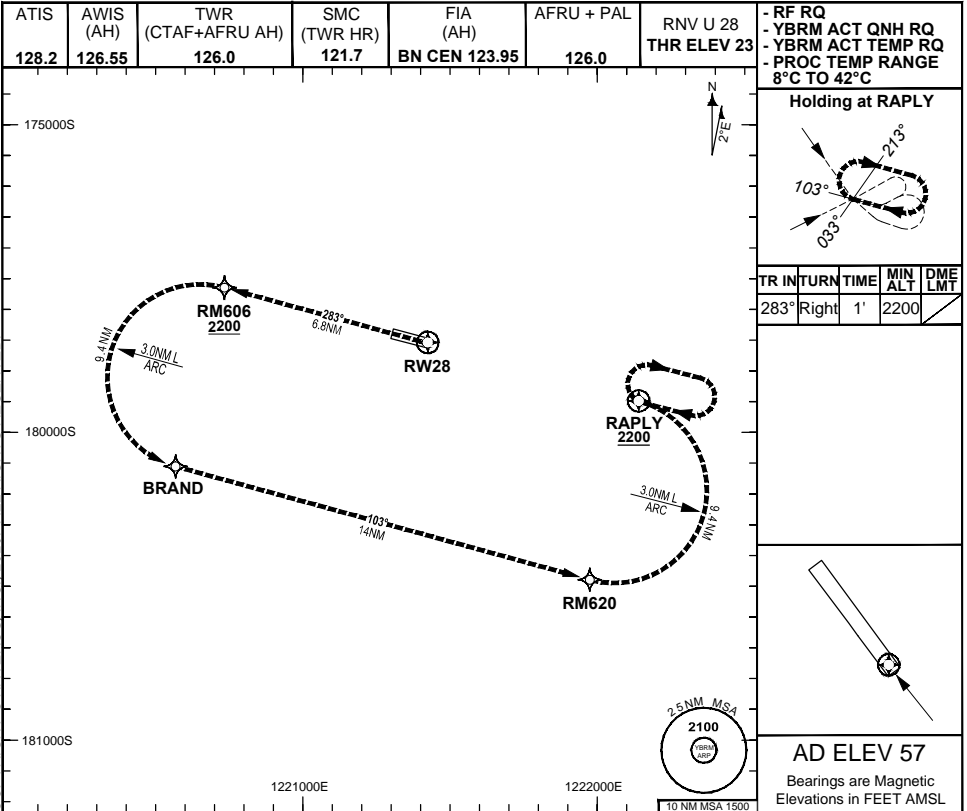
**FOR CASA APPROVED  
OPERATORS ONLY**

25 MAR 2021

USE QNH

GE PROPRIETARY INFORMATION

COPYRIGHT © NAVERUS, INC. 2020. ALL RIGHTS RESERVED.



**ENGINE OUT MISSED APPROACH:**

If unable to cross RM606 at 2200FT, advise ATC, and climb to 2200FT via the RNAV (RNP) Engine Out Missed Approach track to RAPLY and hold as published.  
 Acceleration altitude 1100FT QNH (1000FT AGL).  
 Continue to climb in hold as necessary to 2200FT, or as directed by ATC. EO hold only. Maximum holding speed 230 KIAS.

**DO NOT USE FOR NAVIGATION**

Prepared by GE Aviation

