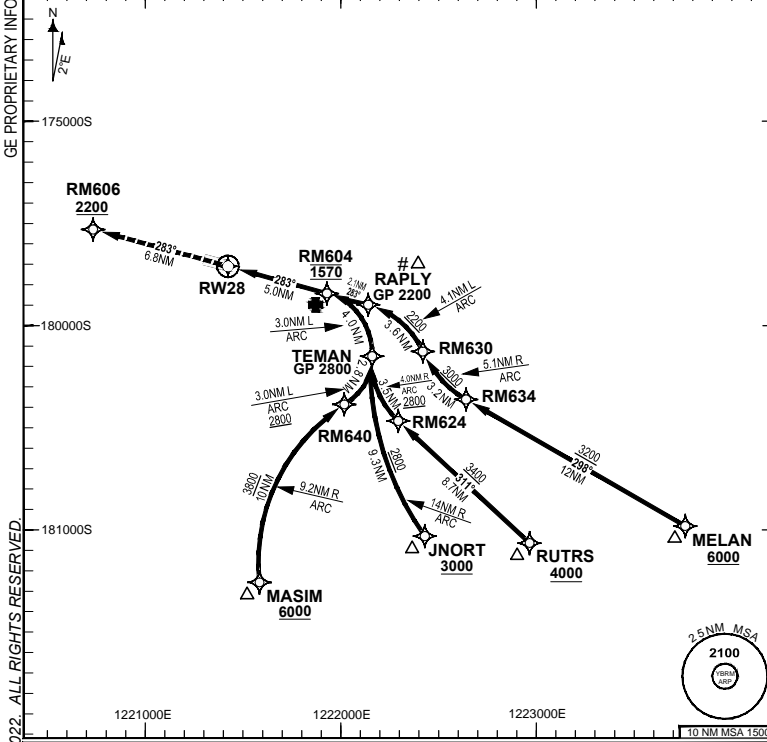


**FOR CASA APPROVED
OPERATORS ONLY**

8 SEP 2022

USE QNH

ATIS	AWIS (AH)	TWR (CTAF+AFRU AH)	SMC (TWR HR)	FIA (AH)	AFRU + PAL	RNV U 28 THR ELEV 23	RNP AR APCH - RF RQ - YBRM ACT QNH RQ - YBRM ACT TEMP RQ - PROC TEMP RANGE +8°C TO +42°C
128.2	126.55	126.0	121.7	BN CEN 123.95	126.0		



**Holding as directed
by ATC**

TR	INTURN	TIME	MIN ALT	DME LMT

AD ELEV 57
Bearings are Magnetic
Elevations in FEET AMSL

DISTANCE FM THR	RM604	RAPLY	TEMAN				
ALT (2.80° APCH PATH)	1570	2200	2800				

MISSED APPROACH:
Climb to 2200FT or as directed by ATC via the RNP AR Missed Approach track to RM606. Acceleration altitude 1100FT QNH.

ENGINE OUT MISSED APPROACH:
SEE PAGE 2

	RM606	RW28	MAPt	FAF RM604	
NM FM THR	6.8	0		5.0	

GP 2.80°
2200
RAPLY (7.1NM)
2800
TEMAN (9.0NM)

TCH 50FT

NOTES

- Lateral transition to Missed Approach must not be initiated prior to DA/H PSN.
- APCH Path does not coincide with VGSI on glide slope indication.
- Latest point where the ACFT can join the PROC.
- Minimum MAP gradient (All Engines) for RNP 0.10 and RNP 0.30 is 4.4% to 2200FT.

CATEGORY	A B		C
	RNP (0.3)		
RNP (0.1)		DA(H) 313 (290-1.5)	
	N/A		
CIRCLING		NOT AUTHORISED	
ALTERNATE			

Changes: TITLE, RNP AR NOTES, RNAV (RNP) to RNP AR BRMGN06-172

DO NOT USE FOR NAVIGATION

Prepared by GE Aviation

