

FOR CASA APPROVED OPERATORS ONLY

RNAV- U (RNP) RWY 28 - Page 1
BROOME/INTL, WA (YBRM)

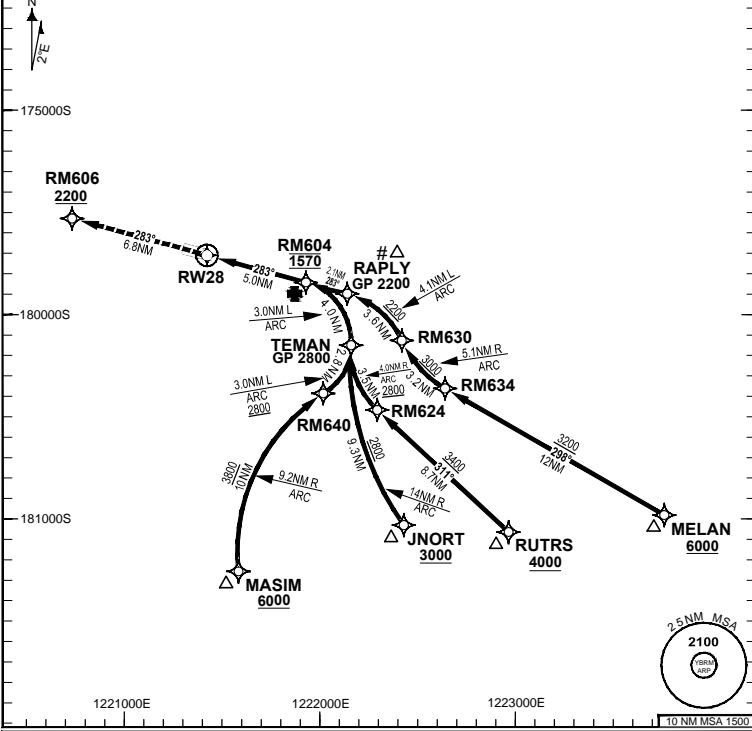
25 MAR 2021

USE QNH

GE PROPRIETARY INFORMATION

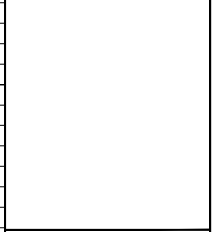
COPYRIGHT © NAVERUS, INC. 2020. ALL RIGHTS RESERVED.

ATIS	AWIS (AH)	TWR (CTAF+AFRU AH)	SMC (TWR HR)	FIA (AH)	AFRU + PAL	RVN U 28	THR ELEV 23	RF RQ YBRM ACT QNH RQ YBRM ACT TEMP RQ PROC TEMP RANGE 8°C TO 42°C
128.2	126.55	126.0	121.7	BN CEN 123.95	126.0			



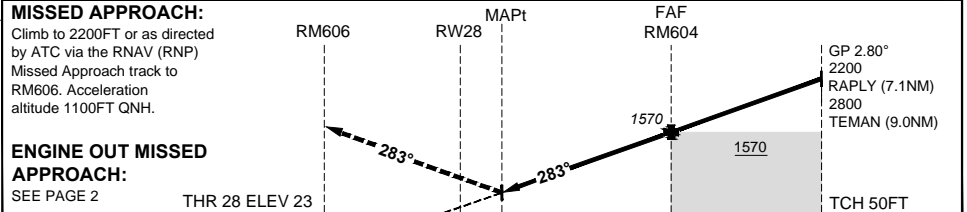
Holding as directed by ATC

TR	IN	TURN	TIME	MIN ALT	DME LMT



AD ELEV 57
Bearings are Magnetic Elevations in FEET AMSL

DISTANCE FM THR	RM604	RAPLY	TEMAN					
ALT (2.80° APCH PATH)	1570	2200	2800					



NM FM THR 6.8 0 5.0

CATEGORY	A	B	C
RNP (0.3)			DA(H) 331 (308-1.7)
RNP (0.1)			DA(H) 313 (290-1.5)
		N/A	
CIRCLING			NOT AUTHORISED
ALTERNATE			

NOTES

- Lateral transition to Missed Approach must not be initiated prior to DA/H PSN.
- APCH Path does not coincide with VGSI on glide slope indication.
- Latest point where the ACFT can join the PROC.
- Minimum MAP gradient (All Engines) for RNP 0.10 and RNP 0.30 is 4.4% to 2200FT.

Changes: REPRINT.

BRMGN06-166

DO NOT USE FOR NAVIGATION

Prepared by GE Aviation

