

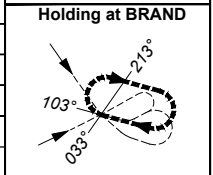
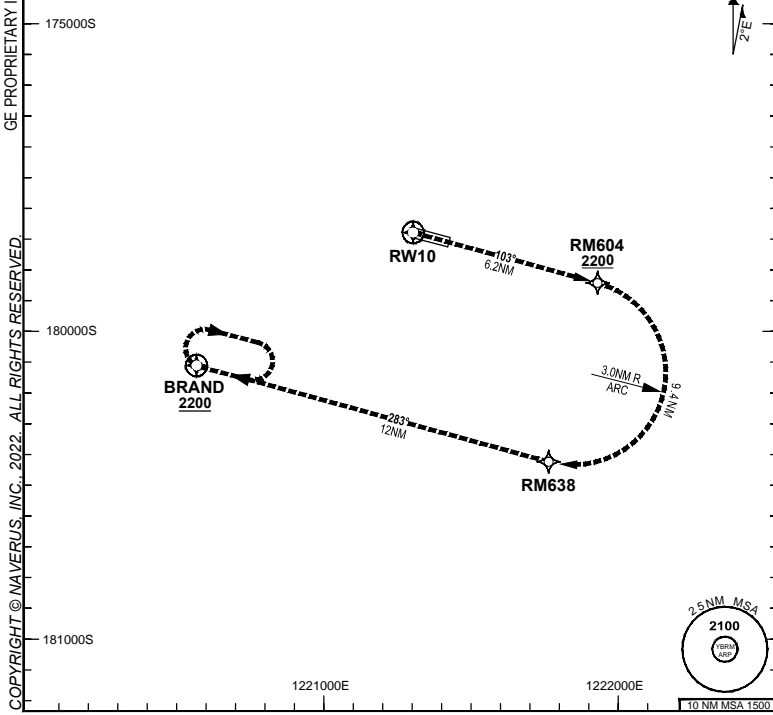
**FOR CASA APPROVED
OPERATORS ONLY**

8 SEP 2022

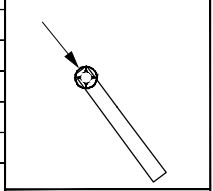
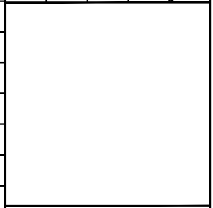
USE QNH

ATIS	AWIS (AH)	TWR (CTAF+AFRU AH)	SMC (TWR HR)	FIA (AH)	AFRU + PAL	RNV U 10 THR ELEV 57
128.2	126.55	126.0	121.7	BN CEN 123.95	126.0	

RNP AR APCH
 - RF RQ
 - YBRM ACT QNH RQ
 - YBRM ACT TEMP RQ
 - PROC TEMP RANGE +8°C TO +42°C



TR	INTURN	TIME	MIN ALT	DME LMT
283°	Right	1'	2200	



AD ELEV 57
 Bearings are Magnetic
 Elevations in FEET AMSL

COPYRIGHT © NAVERUS, INC. 2022. ALL RIGHTS RESERVED.

ENGINE OUT MISSED APPROACH:

If unable to cross RM604 at 2200FT, advise ATC, and climb to 2200FT via the RNP AR Engine Out Missed Approach track to BRAND and hold as published.
 Acceleration altitude 1100FT QNH (1000FT AGL).
 Continue to climb in hold as necessary to 2200FT, or as directed by ATC. EO hold only. Maximum holding speed 230 KIAS.

DO NOT USE FOR NAVIGATION

Prepared by GE Aviation

