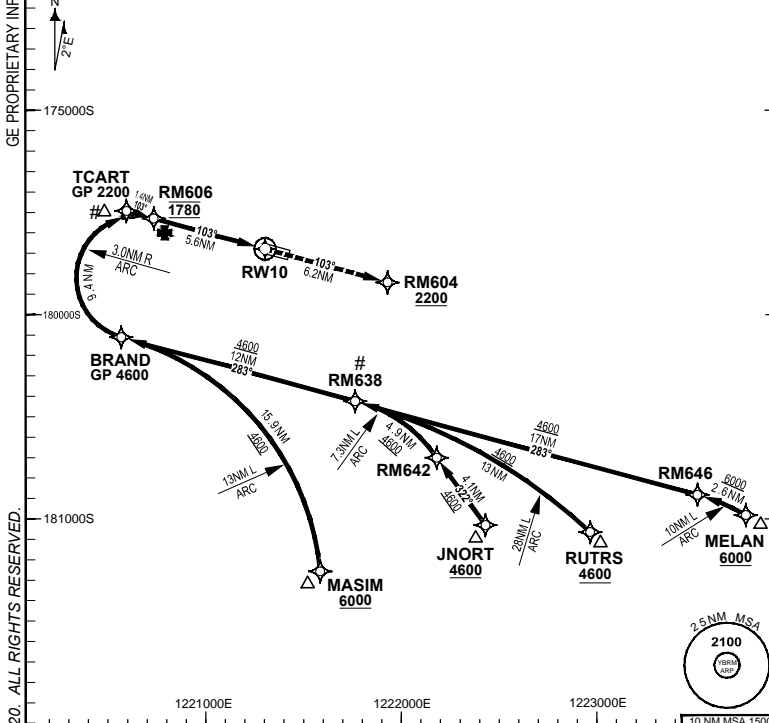


FOR CASA APPROVED OPERATORS ONLY

25 MAR 2021

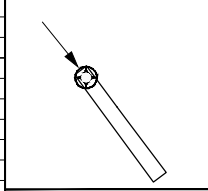
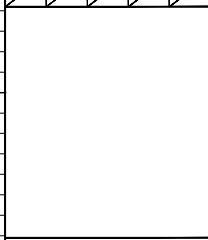
USE QNH

ATIS	AWIS (AH)	TWR (CTAF+AFRU AH)	SMC (TWR HR)	FIA (AH)	AFRU + PAL	RVN U 10 THR ELEV 57	- RF RQ - YBRM ACT QNH RQ - YBRM ACT TEMP RQ - PROC TEMP RANGE 8°C TO 42°C
128.2	126.55	126.0	121.7	BN CEN 123.95	126.0		



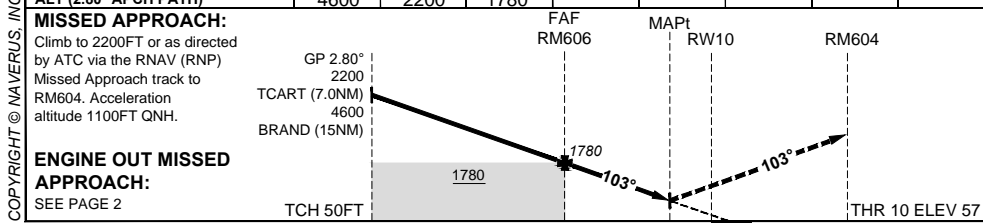
Holding as directed by ATC

TR	INTURN	TIME	MIN ALT	DME LMT



AD ELEV 57
Bearings are Magnetic Elevations in FEET AMSL

DISTANCE FM THR	BRAND	TCART	RM606					
ALT (2.80° APCH PATH)	4600	2200	1780					



NM FM THR

NOTES

1. Lateral transition to Missed Approach must not be initiated prior to DA/H PSN.
2. APCH Path does not coincide with VGSI on glide slope indication.
- #3. Latest point where the ACFT can join the PROC.
4. Minimum MAP gradient (All Engines) 4.8% to 2200FT.

CATEGORY	A	B	C
RNP (0.3)			DA(H) 346 (289-1.5)
		N/A	
CIRCLING			NOT AUTHORISED
ALTERNATE			

Changes: REPRINT.

BRMGN04-166

DO NOT USE FOR NAVIGATION

Prepared by GE Aviation

