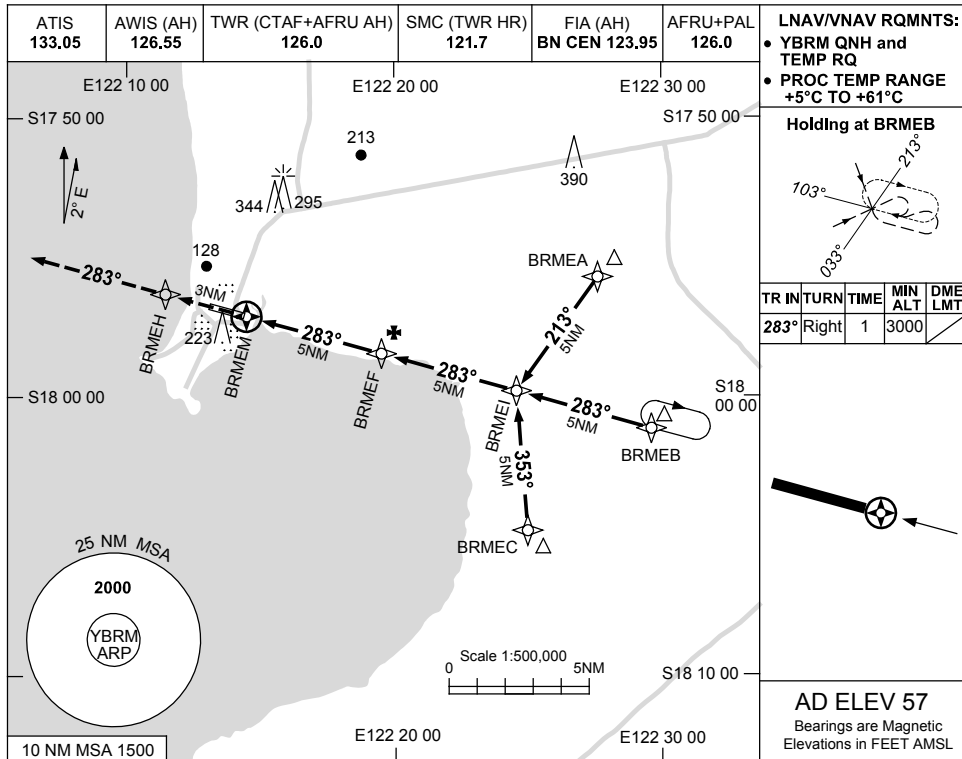


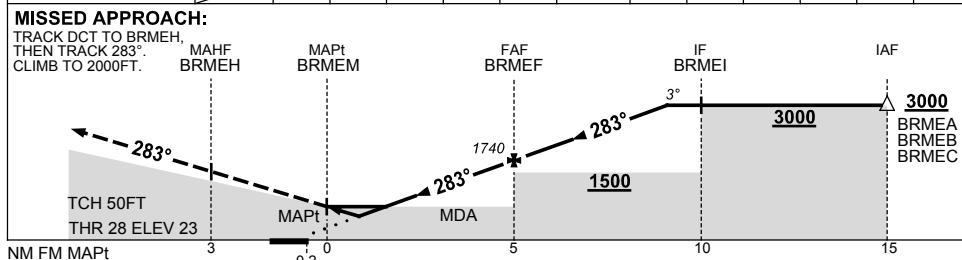
USE QNH

RNAV-Z (GNSS) RWY 28
BROOME, WA (YBRM)

1 MAR 2018



NM TO NEXT WPT	BRMEM	0.8	1.4	2	3	4	BRMEF	1	2	3	4		
ALT (3° APCH PATH)		410	600	780	1100	1420	1740	2060	2370	2690	3000		



NOTES

CATEGORY	A	B	C	D
LNAV/VNAV	410 (388-2.2)			
LNAV	600 (578-3.3)			
CIRCLING	650 (593-2.4)	840 (783-4.0)		850 (793-5.0)
ALTERNATE	(1093-4.4)		(1283-6.0) (1293-7.0)	

1. MAX IAS: INITIAL : 210KT.
2. HOLDING NOT CONTAINED IN CTA.

Changes: HAA, Editorial.

BRMGN02-154