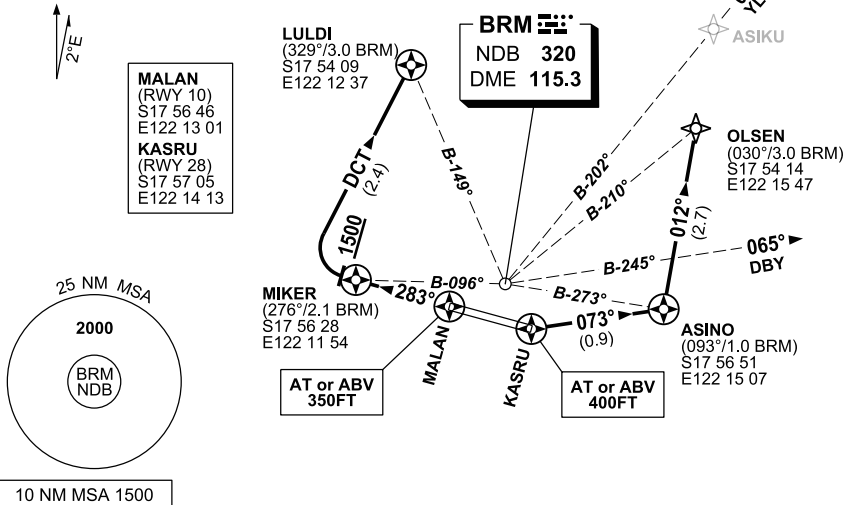


# STANDARD INSTRUMENT DEPARTURES (SID) BROOME CAT H DEPARTURE (RNAV) - RWY 10 & 28 BROOME, WA (YBRM)

**1 MAR 2018**

AWIS <b>126.55</b>	ATIS <b>133.05</b>	TWR (CTAF + AFRU AH) <b>126.0</b>	SMC (TWR HR) <b>121.7</b>	FIA (AH) <b>BN CEN 123.95</b>	AFRU+PAL <b>126.0</b>
-----------------------	-----------------------	--------------------------------------	------------------------------	----------------------------------	--------------------------

NOT TO SCALE



**RWY 28  
LULDI ONE (RNAV) DEPARTURE  
CAT H ONLY GRAD 5.0%**

- FATO RWY 28 at intersection TWY G
- Proceed visually to MALAN
- Initial Departure Fix MALAN
- **CROSS** MALAN AT or ABV 350FT
- Track 283° to MIKER
- After passing MIKER **AND** NOT BLW 1500FT turn RIGHT
- Track DCT to LULDI (approx. 015°)
- **After passing LULDI**, track to intercept ATC cleared route by 5 DME

**RWY 10  
ASINO ONE (RNAV) DEPARTURE  
CAT H ONLY GRAD 5.0%**

- FATO RWY 10 at intersection TWY F2
- Proceed visually to KASRU
- Initial Departure Fix KASRU
- **CROSS** KASRU AT or ABV 400FT
- Turn LEFT, track 073° to ASINO
- Track to intercept ATC cleared route by 5 DME

**FOR OLSEN**

- Turn LEFT, track 012° to OLSEN
- Track to intercept ATC cleared route by 5 DME

**COMMUNICATIONS FAILURE PROCEDURE**

On recognition of communication failure

- Squawk 7600
- Maintain last ATC assigned track for two minutes and, if necessary, climb to minimum safe altitude to maintain terrain clearance, then
- Proceed in accordance with the latest ATC route clearance acknowledged.

Changes: From SUP H142/17

BRMDP01-154

