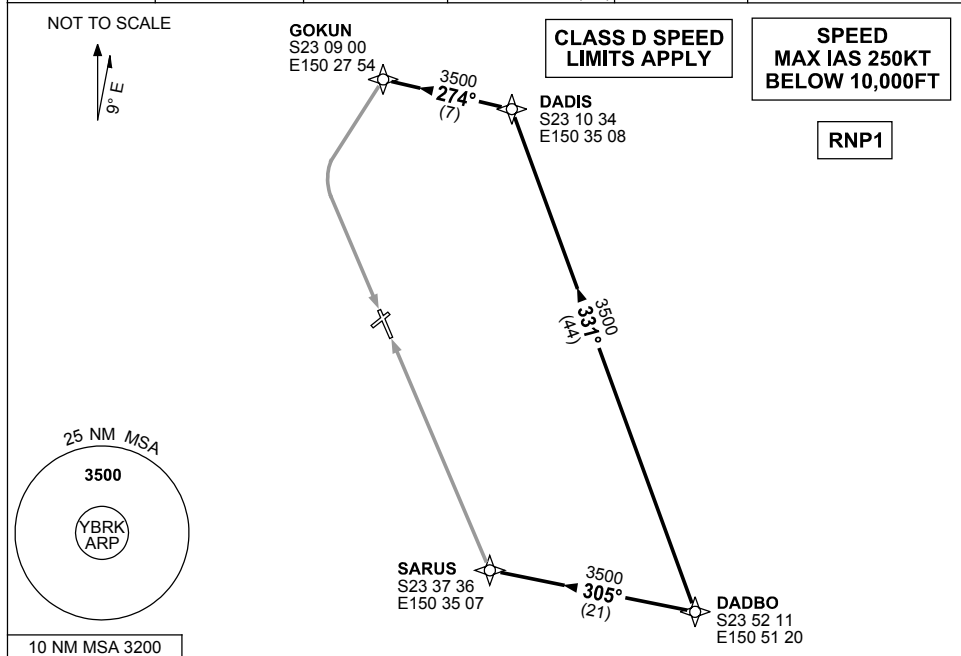


**STANDARD INSTRUMENT ARRIVAL (STAR)
DADBO ONE ARRIVAL (RNAV)
ROCKHAMPTON, QLD (YBRK)**

24 MAY 2018

ATIS 116.9 128.5	TWR 118.1	CTAF+AFRU (AH) 118.1	FIA BN CEN 119.55 RK APP 123.75 (AH)	AFRU+PAL (AH) 118.1	Bearings are Magnetic Elevations in FEET AMSL
---------------------	--------------	-------------------------	--	------------------------	--



ARRIVAL: DADBO ONE

RWY 15

- From DADBO track 331° to DADIS
- Turn LEFT, track 274° to GOKUN
- Track via RNAV-Z RWY 15

RWY 33

- From DADBO track 305° to SARUS
- Track via RNAV-Z RWY 33

COMMUNICATIONS FAILURE: PROCEDURE IN IMC

- Squawk 7600, comply with vertical navigation requirements, but not below MSA.
- Track via the latest STAR clearance to the nominated runway, then fly the most suitable approach in accordance with ERSA EMERG Section 1.5.