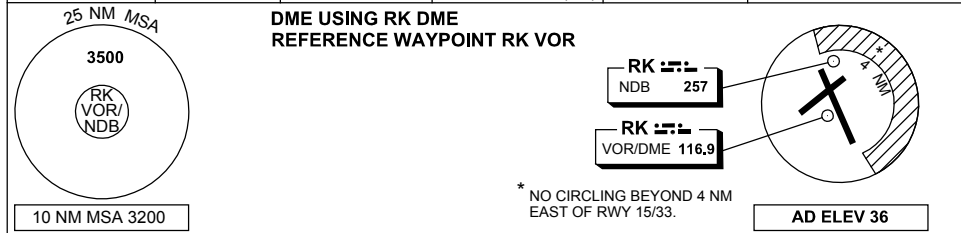


DME or GNSS ARRIVAL PROCEDURES ROCKHAMPTON, QLD (YBRK) Page 2

1 MAR 2018

ATIS 116.9 128.5	TWR 118.1	CTAF+AFRU (AH) 118.1	FIA BN CEN 119.55 RK APP 123.75 (AH)	AFRU+PAL (AH) 118.1	Bearings are Magnetic Elevations in FEET AMSL
---------------------	--------------	-------------------------	--	------------------------	--



SECTOR C	<p style="text-align: right;">VOR or NDB</p>											MISSED APPROACH:				
<p>RK VOR or NDB</p>												<p>TURN AS APPROPRIATE TRACK 315°. CLIMB TO 3500FT.</p>				
NM FM VOR	34	21	16	13	8	6	3	0								
CIRCLING MINIMA	A,B: 850-2.4				C: 1080-4.0			D: 1080-5.0								
NM FM VOR	13.7	13	12	11	10	9	8	7	6	5	4	3	2	1.3	1	0.6
ALT (3° APCH PATH)	5000	4790	4470	4150	3830	3520	3200	2880	2560	2240	1930	1600	1290	1080	970	850

Changes: AFRU+PAL.

BRKDG02-154