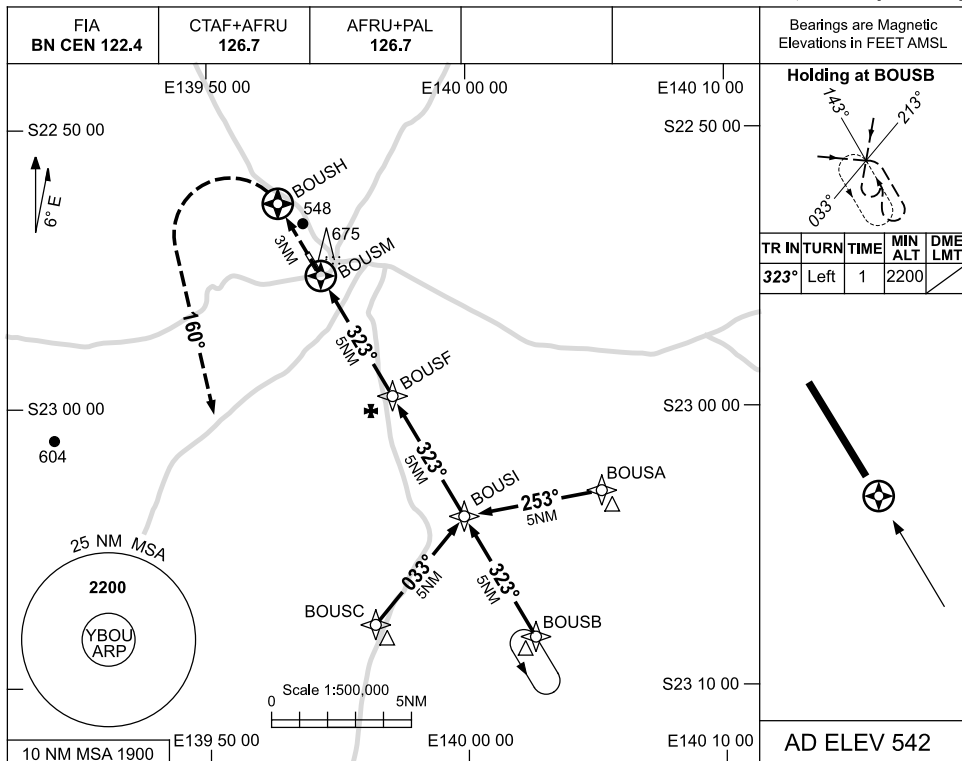


USE QNH

RNAV-S (GNSS)
BOULIA, QLD (YBOU)

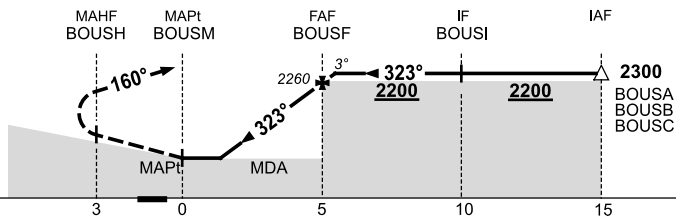
18 AUG 2016



NM TO NEXT WPT	BOUSM	1.5	1.8	2	3	4	BOUSF	0.2				
ALT (3° APCH PATH)		1140	1240	1310	1630	1950	2260	2300				

MISSED APPROACH:

TRACK DCT TO BOUSH,
 THEN TURN LEFT,
 TRACK 160°.
 CLIMB TO 2200FT.



NOTES

CATEGORY	A	B	C	D
				NOT APPLICABLE
CIRCLING	1140 (598-2.4)		1240 (698-4.0)	
ALTERNATE	(1098-4.4)		(1198-6.0)	

1. MAX IAS:
 INITIAL : 210KT.

Changes: PROCEDURE, MAG VAR.

BOUGN02-148