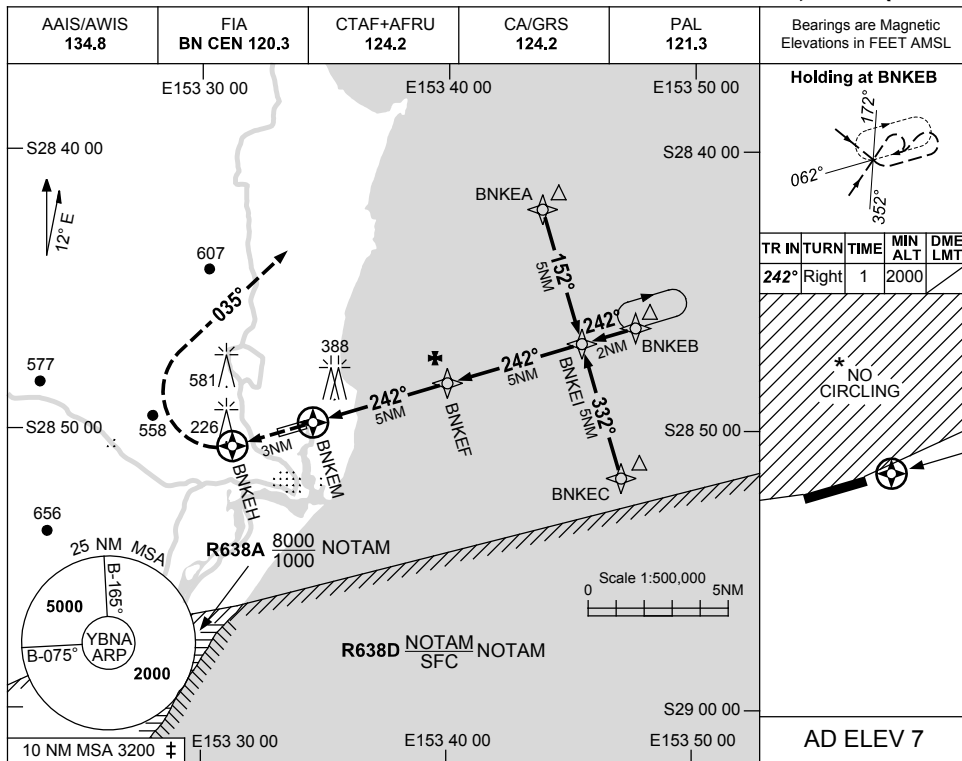
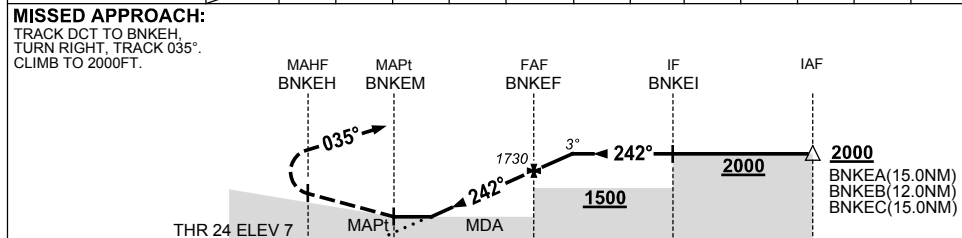


USE QNH RNAV-Z^(GNSS) RWY 24
BALLINA/BYRON GATEWAY, NSW (YBNA)

25 MAY 2017



NM TO NEXT WPT	BNKEM	1.6	2	3	4	BNKEF	0.8						
ALT (3° APCH PATH)		660	780	1100	1410	1730	2000						



NM FM MAPt

CATEGORY	A	B	C	D
S-I GNSS	660 (653-3.7)			NOT APPLICABLE
CIRCLING *	790 (783-2.4)		1030 (1023-4.0)	
ALTERNATE	(1283-4.4)		(1523-6.0)	

- NOTES**
1. MAX IAS:
HOLDING: 210KT.
INITIAL : 210KT.
 - * 2. NO CIRCLING NTH OF RWY 06/24.
 - ‡ 3. 10 NM MSA IS A COMBINED AREA FOR YBNA, YLIS.

Changes: CA/GRS, AAIS.

BNAGN02-151