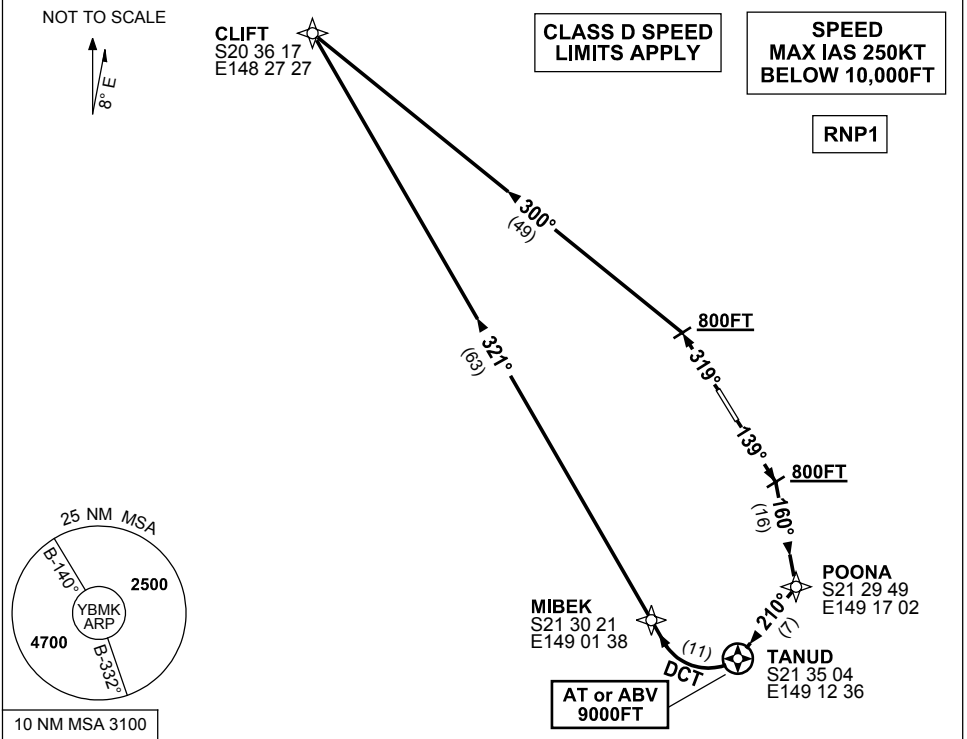


**STANDARD INSTRUMENT DEPARTURES (SID)
CLIFT TWO DEPARTURE (RNAV)
MACKAY, QLD (YBMK)**

24 MAY 2018

ATIS 112.7 128.0	TWR 124.5	CTAF+AFRU (AH) 124.5	AFRU+PAL (AH) 124.5	FIA BN CEN 135.5 MK APP 125.65 (AH)	Bearings are Magnetic Elevations in FEET AMSL
---------------------	--------------	-------------------------	------------------------	---	--



CLIFT TWO DEPARTURE

RWY 14

- GRAD 3.3% (5.6% to 9000FT)
- Track 139°
- AT or ABV 800FT turn RIGHT, intercept 160° to POONA
- Turn RIGHT, track 210° to TANUD
- **Cross** TANUD AT or ABV 9000FT
- Turn RIGHT, track DCT to MIBEK
- Turn RIGHT, track 321° to CLIFT, thence as cleared

RWY 32

- GRAD 3.7% to 800FT, thence 3.3%
- Track 319°
- AT or ABV 800FT turn LEFT, intercept 300° to CLIFT, thence as cleared

CAUTION: Trees in RWY 32 Dep Area