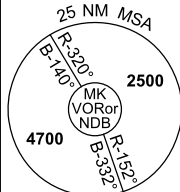


DME or GNSS ARRIVAL PROCEDURES MACKAY, QLD (YBMK) Page 1

18 AUG 2016

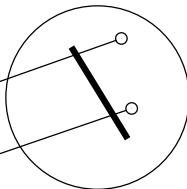
ATIS 112.7 128.0	TWR 124.5	CTAF+AFRU (AH) 124.5	AFRU+PAL (AH) 124.5	FIA BN CEN 135.5 MK APP 125.65 (AH)	Bearings are Magnetic Elevations in FEET AMSL
---------------------	--------------	-------------------------	------------------------	---	--



DME USING MK DME REFERENCE WAYPOINT MK VOR

MK \equiv NDB 308

MK \equiv VOR/DME 112.7



10 NM MSA 3100

AD ELEV 19

SECTOR A													MISSED APPROACH: TURN LEFT, TRACK 130°. CLIMB TO 2500FT.		
NM FM VOR	22	15	11	8	5	4	2	0							
CIRCLING MINIMA			A,B: 710-2.4			C: 900-4.0			D: 1160-5.0						
NM FM VOR	11	10	9	8	7	6	5	4	3	2	1.4	1	0.7	0.2	
ALT(3.29° APCH PATH)	4500	4150	3800	3450	3100	2750	2400	2060	1710	1360	1160	1010	900	710	

SECTOR B													MISSED APPROACH: TURN AS APPROPRIATE, TRACK 130°. CLIMB TO 2500FT.		
NM FM VOR	25	17	15	13	8	6	3	0							
CIRCLING MINIMA			A,B: 810-2.4			C: 900-4.0			D: 1160-5.0						
NM FM VOR	13	12	11	10	9	8	7	6	5	4	3	2	1.9	1.1	0.9
ALT (3° APCH PATH)	4700	4370	4050	3730	3410	3090	2770	2460	2140	1820	1500	1180	1160	900	810

SECTOR C													MISSED APPROACH: TURN RIGHT, TRACK 060°. CLIMB TO 2500FT OR AS DIRECTED BY ATC.		
NM FM VOR	25	17	15	13	8	5	3	0							
CIRCLING MINIMA			A,B: 710-2.4			C: 900-4.0			D: 1160-5.0						
NM FM VOR	14	12	10	9	8	7	6	5	4	3	2	1.9	1.1	1	0.5
ALT (3° APCH PATH)	5000	4370	3730	3410	3100	2780	2460	2140	1820	1500	1180	1160	900	870	710

Changes: RWY 05/23 DCMSD.

BMKDG01-148