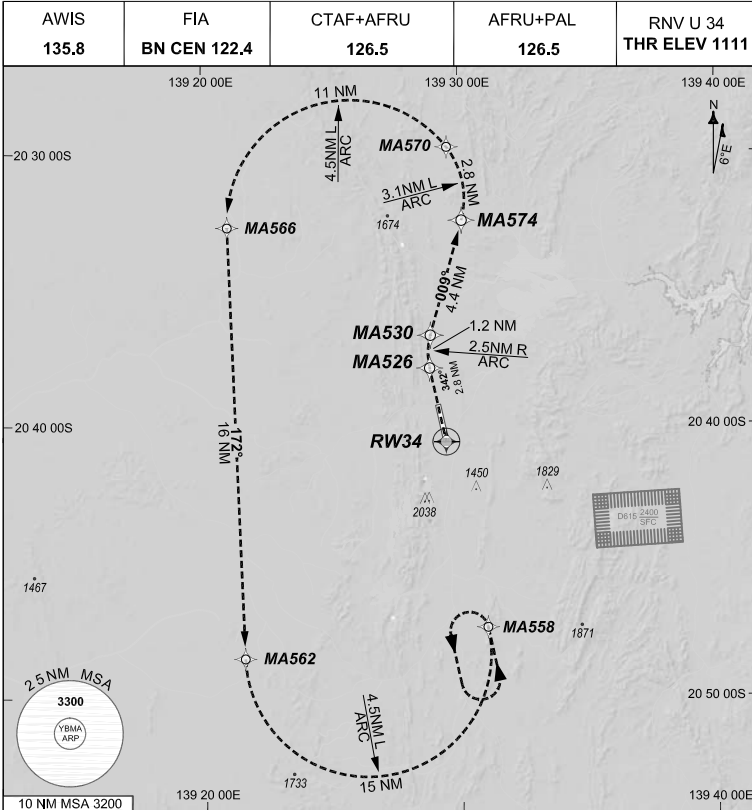


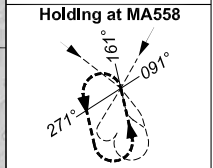
**FOR CASA APPROVED
OPERATORS ONLY
USE QNH**

1 DEC 2022

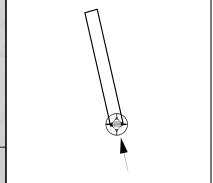
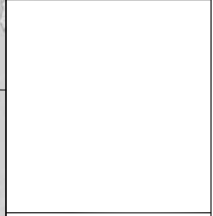
GE PROPRIETARY INFORMATION



RNP AR APCH
 - RF RQ
 - YBMA ACT QNH RQ
 - YBMA ACT TEMP RQ
 - PROC TEMP RANGE
 -2°C TO +45°C



TR	INTURN	TIME	MIN ALT	DME LMT
341°	Left	1'	3300	



AD ELEV 1121
 Bearings are Magnetic
 Elevations in FEET AMSL

ENGINE OUT MISSED APPROACH:

Track via the RNP AR Engine Out Missed Approach track to MA558 and hold as published. Acceleration altitude 2200FT QNH (1000FT AGL). Maximum holding speed 230 KIAS. EO hold only.

202208050931 COPYRIGHT © 2022 NAVERUS, INC. USA

Changes: NEW

BMAGN06-173

DO NOT USE FOR NAVIGATION

Prepared by GE Aviation

