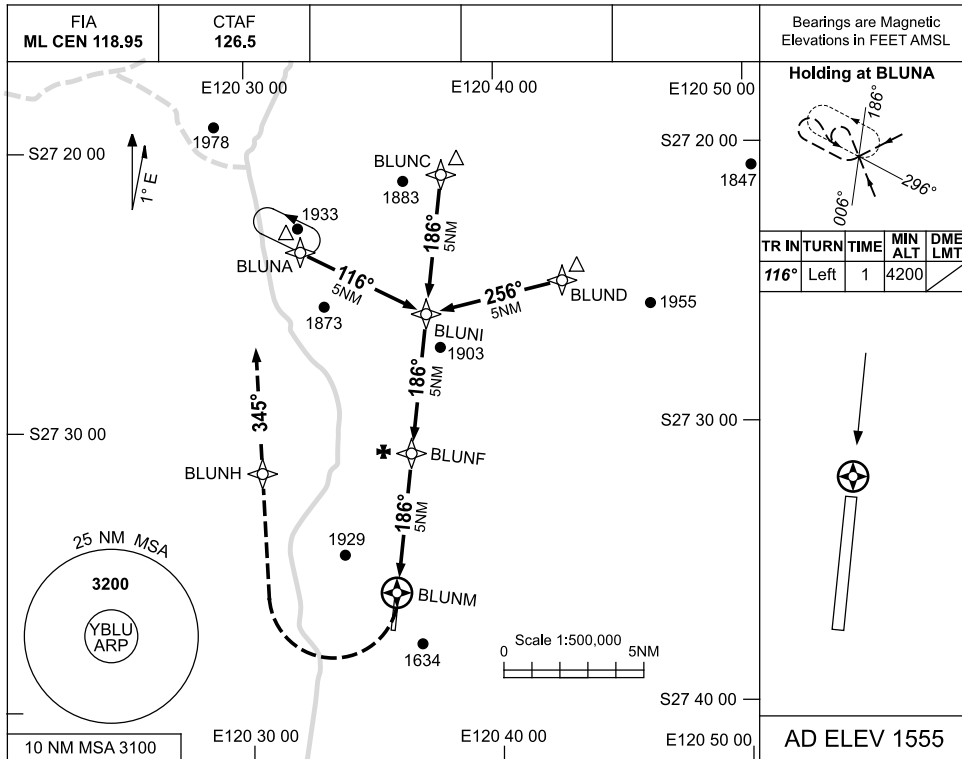


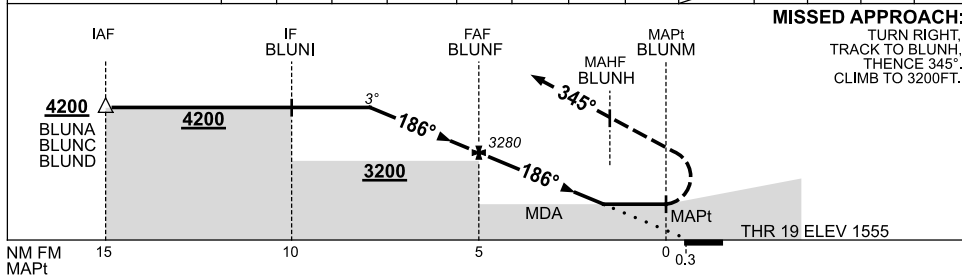
USE QNH

RNAV-Z (GNSS) RWY 19
BELLEVUE, WA (YBLU)

3 MAR 2016



NM TO NEXT WPT	2.9	2	1	BLUNF	4	3	2	1.9	BLUNM			
ALT (3° APCH PATH)	4200	3920	3600	3280	2960	2650	2330	2290				



NOTES

CATEGORY	A	B	C	D
S-I GNSS	2290 (735-4.2)			NOT APPLICABLE
CIRCLING	2400 (845-2.4)		2500 (945-4.0)	
ALTERNATE	(1345-4.4)		(1445-6.0)	

- MAX IAS:
INITIAL : 210KT.
MAP TURN: 160KT.
- CAUTION:** PROC OVERLAYS WITH LEINSTER AND MT KEITH PROCEDURES.

Changes: CIRCLING MNM.

BLUGN01-146