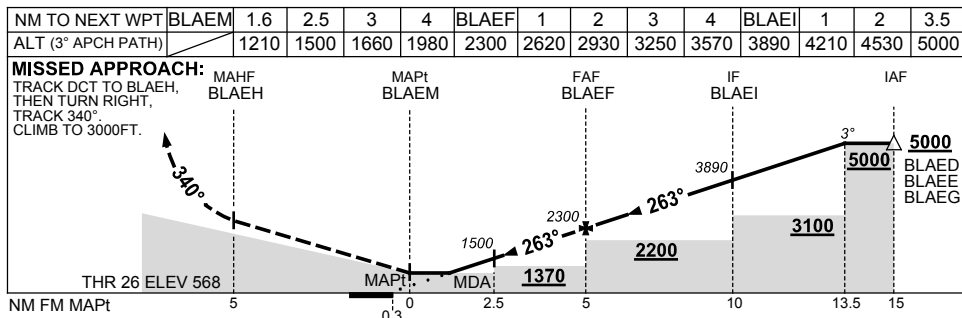
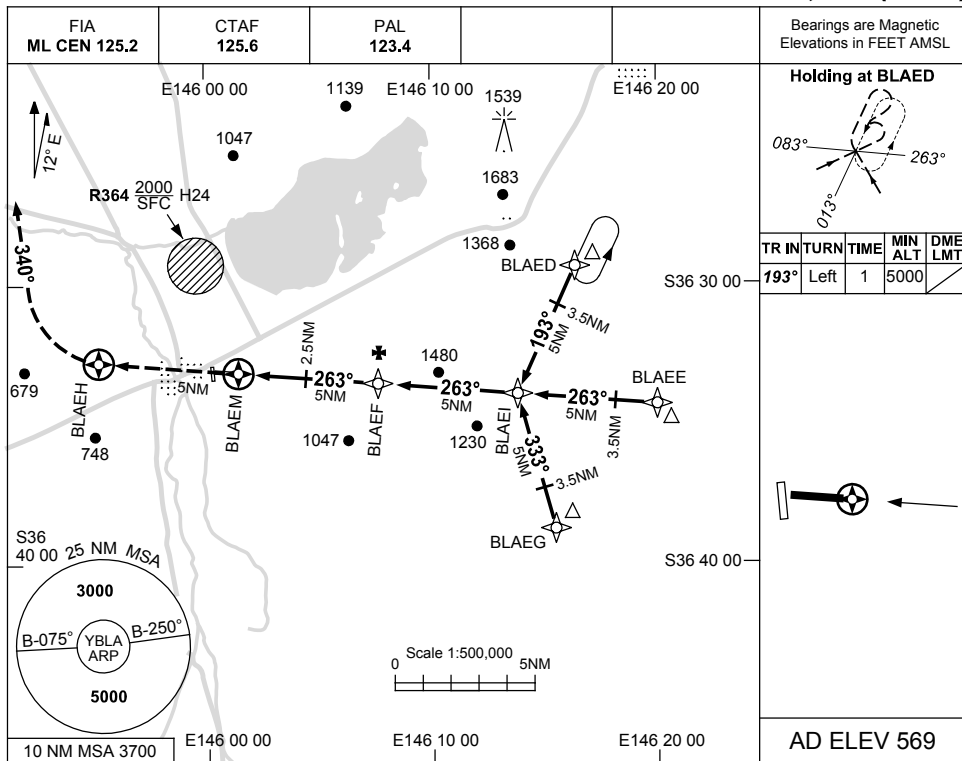


USE QNH

RNAV-Z (GNSS) RWY 26  
**BENALLA, VIC (YBLA)**

9 NOV 2017



**NOTES**

- MAX IAS:  
 INITIAL : 210KT.  
 HOLD : 210KT.

CATEGORY	A	B	C	D
LNAV	1210 (641-3.6)		NOT APPLICABLE	
CIRCLING	1250 (681-2.4)			
ALTERNATE	(1181-4.4)			

Changes: MINIMA, DIST-ALT SCALE, MSA, CAT C REMOVED, LNAV.

BLAGN01-153