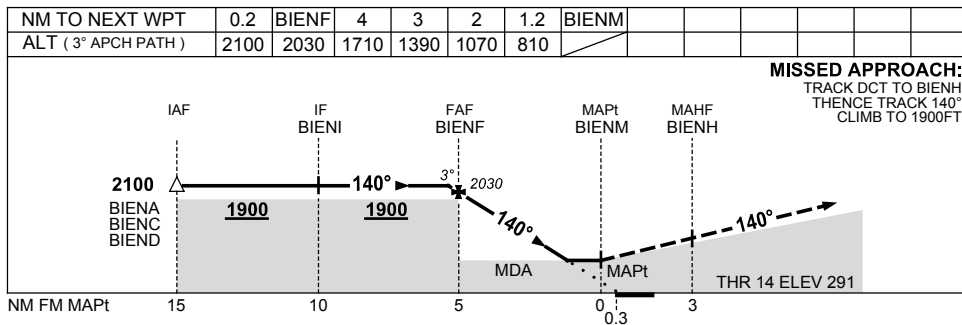
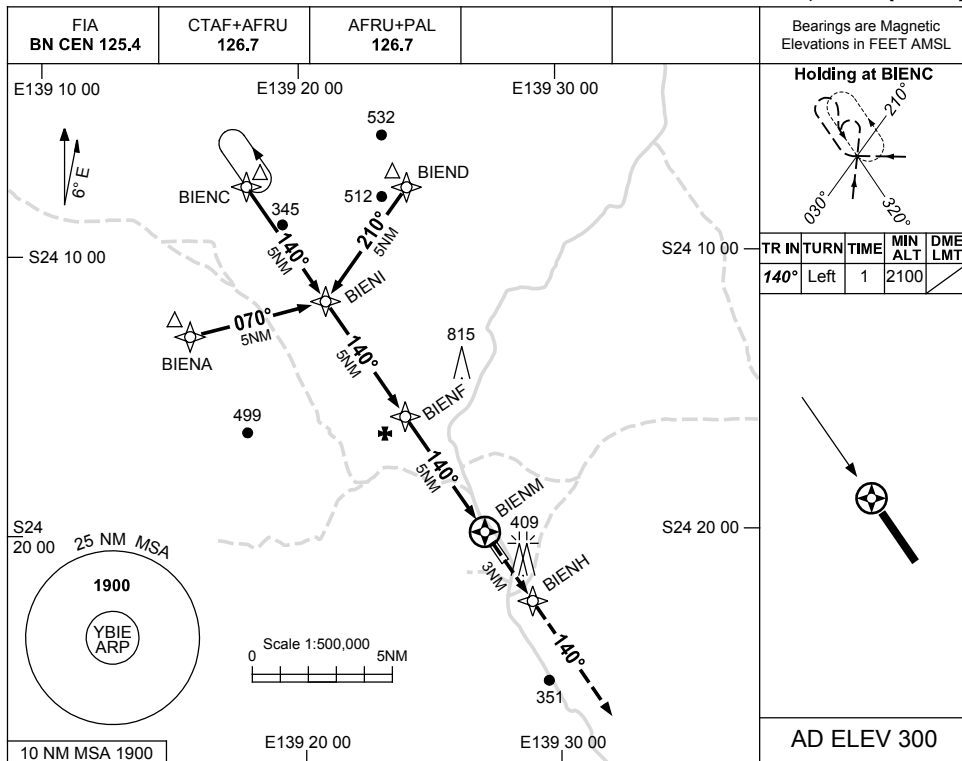


USE QNH

RNAV-Z^(GNSS) RWY 14
BEDOURIE, QLD (YBIE)

2 MAR 2017



NOTES

CATEGORY	A	B	C	D
S-I GNSS	810 (519-2.9)			NOT APPLICABLE
CIRCLING	900 (600-2.4)		1000 (700-4.0)	
ALTERNATE	(1100-4.4)		(1200-6.0)	

1. MAX IAS:
 INITIAL : 210KT.

Changes: MAG VAR, TRACKS.

BIEGN01-150