

25 MAR 2021

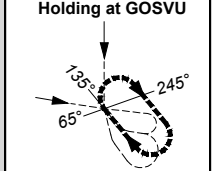
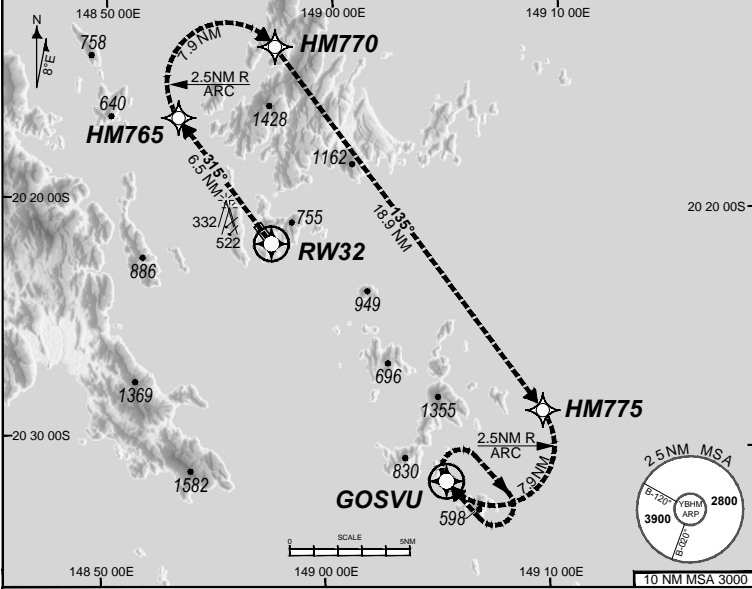
USE QNH

HAMILTON ISLAND, QLD (YBHM)

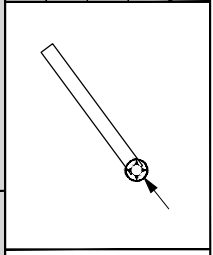
GE PROPRIETARY INFORMATION

ATIS 128.35	TWR 118.7	FIA (AH) BN CEN 135.5	AWIS 124.75	CTAF+AFRU (AH) 127.85	RNV U 32 THR ELEV 15
-----------------------	---------------------	---------------------------------	-----------------------	---------------------------------	-------------------------

- RF RQ
- YBHM ACT QNH RQ
- YBHM ACT TEMP RQ
- PROC TEMP RANGE +14°C TO +34°C



TR	INTURN	TIME	MIN ALT	DME LMT
315°	Right	1'	4000	



AD ELEV 15
Bearings are Magnetic Elevations in FEET AMSL

ENGINE OUT MISSED APPROACH:

Track via the RNAV (RNP) Engine Out Missed Approach track to GOSVU and hold as published.

Acceleration altitude See Engineering Report.
Continue to climb in hold as necessary to 4000FT, or as directed by ATC. EO hold only, not contained in CTA. Maximum holding speed **230 KIAS**.

202011121626 COPYRIGHT 2020 NAVERUS, INC. USA

Revision: Removed ATIS 114.4

BHMG08-166

DO NOT USE FOR NAVIGATION

Prepared by GE Aviation

