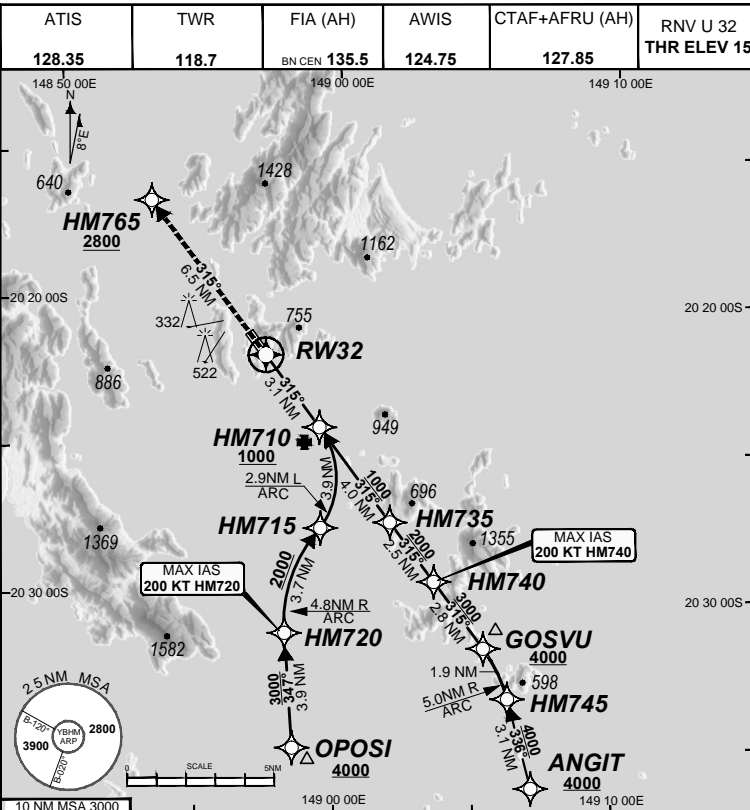


FOR CASA APPROVED OPERATORS ONLY

USE QNH

25 MAR 2021

GE PROPRIETARY INFORMATION



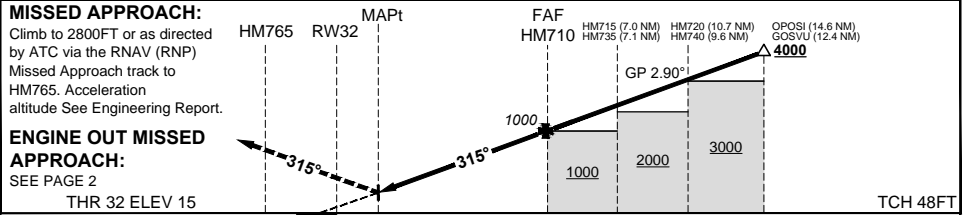
RF RQ  
 YBHM ACT QNH RQ  
 YBHM ACT TEMP RQ  
 PROC TEMP RANGE  
 +14°C TO +34°C

Holding as directed by ATC

TR	IN	TURN	TIME	MIN	DME
				ALT	LMT

AD ELEV 15  
 Bearings are Magnetic  
 Elevations in FEET AMSL

ALT (2.90° APCH PATH)	RW32	HM710	HM715	HM735	HM740	HM720
	63	1000	2180	2230	3000	3300



CATEGORY	A	B	C	D
RNP (0.30)	NOT APPLICABLE		DA(H) 583' (568)-3.2	
RNP ( )	NOT APPLICABLE		DA(H) ( ) - .	
RNP ( )	NOT APPLICABLE		DA(H) ( ) - .	
RNP ( )	NOT APPLICABLE		DA(H) ( ) - .	
CIRCLING			NOT AUTHORISED	

- NOTES**
- PROC AVBL up to MLW.
  - Lateral transition to MAP must not be initiated prior to DA/H PSN.
  - APCH Path does not coincide with PAPI glide path 3°.
  - Transient yacht masts may infringe RWY 32 visual approach slope clearance.
  - See Engineering Report for Minimum MAP gradient (AE) to 2800 FT.

202011121626 COPYRIGHT 2020 NAVERUS, INC. USA

Revision: Removed ATIS 114.4

BHMG07-166

**DO NOT USE FOR NAVIGATION**

Prepared by GE Aviation

