

25 MAR 2021

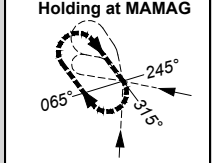
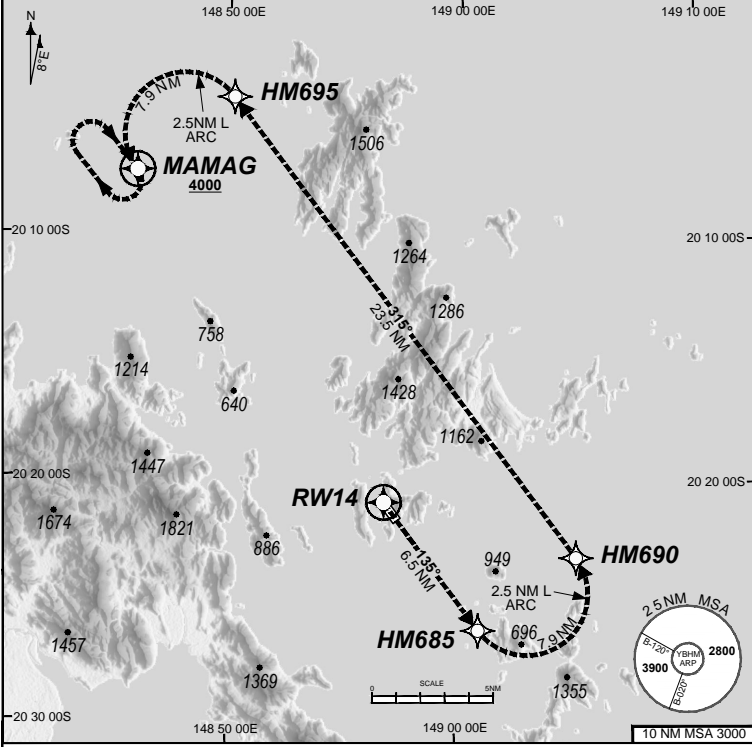
USE QNH

HAMILTON ISLAND, QLD (YBHM)

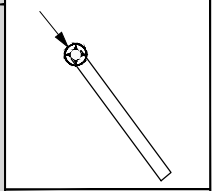
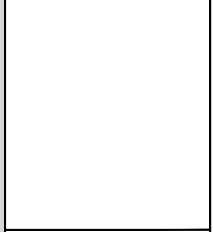
GE PROPRIETARY INFORMATION

ATIS <b>128.35</b>	TWR <b>118.7</b>	FIA (AH) BN CEN <b>135.5</b>	AWIS <b>124.75</b>	CTAF+AFRU (AH) <b>127.85</b>	RNV P 14 THR ELEV 15
-----------------------	---------------------	---------------------------------	-----------------------	---------------------------------	-------------------------

- RF RQ  
- YBHM ACT QNH RQ  
- YBHM ACT TEMP RQ  
- PROC TEMP RANGE  
+14°C TO +34°C



TR IN	TURN	TIME	MIN ALT	DME LMT
135°	Right	1'	4000	



**AD ELEV 15**  
Bearings are Magnetic  
Elevations in FEET AMSL

**ENGINE OUT MISSED APPROACH:**

Track via the RNAV (RNP) Engine Out Missed Approach track to MAMAG and hold as published.

Acceleration altitude See Engineering Report.  
Continue to climb in hold as necessary to 4000FT, or as directed by ATC. EO hold only, not contained in CTA. Maximum holding speed **230 KIAS**.

202011121625 COPYRIGHT 2020 NAVERUS, INC. USA

Revision: Removed ATIS 114.4

BHMG04-166

**DO NOT USE FOR NAVIGATION**

Prepared by GE Aviation

