

FOR CASA APPROVED OPERATORS ONLY

25 MAR 2021

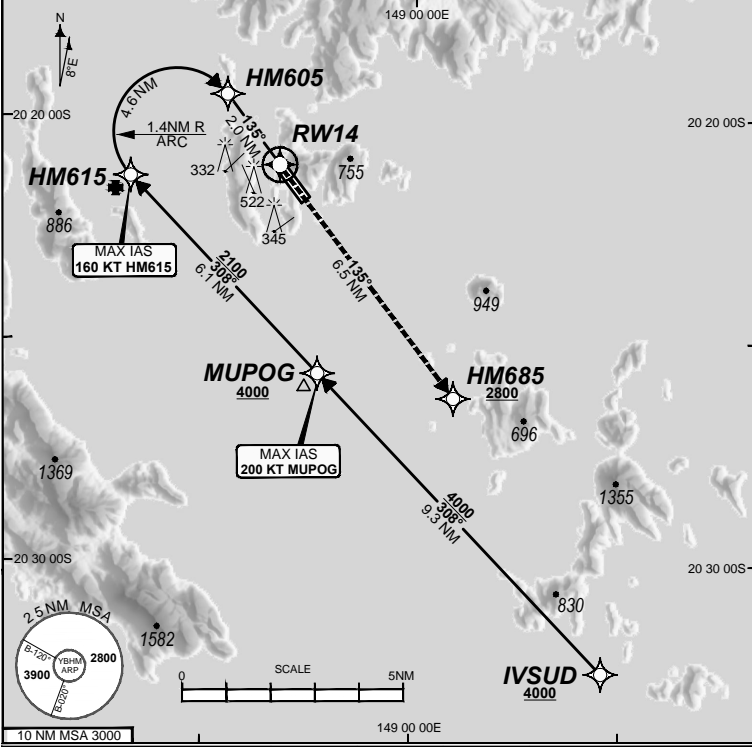
USE QNH

HAMILTON ISLAND, QLD (YBHM)

GE PROPRIETARY INFORMATION

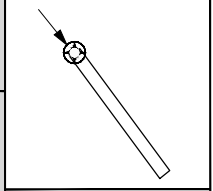
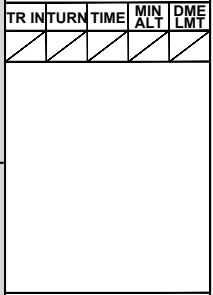
ATIS 128.35	TWR 118.7	FIA (AH) BN CEN 135.5	AWIS 124.75	CTAF+AFRU (AH) 127.85	RNV P 14 THR ELEV 15
-----------------------	---------------------	---------------------------------	-----------------------	---------------------------------	-------------------------

- RF RQ
- YBHM ACT QNH RQ
- YBHM ACT TEMP RQ
- PROC TEMP RANGE
+14°C TO +34°C



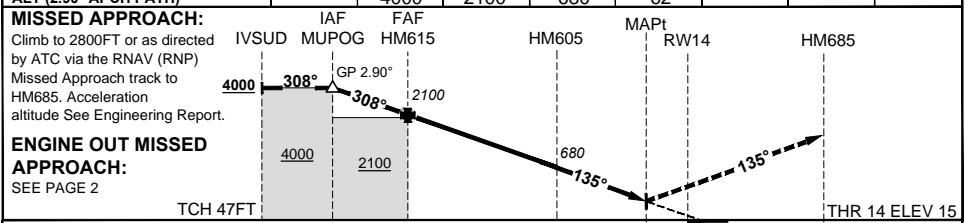
Holding as directed by ATC

TR	IN	TURN	TIME	MIN	DME
				ALT	LMT



AD ELEV 15
Bearings are Magnetic Elevations in FEET AMSL

			MUPOG	HM615	HM605	RW14		
ALT (2.90° APCH PATH)			4000	2100	680	62		



NM FM THR	22	12.7	6.6	2.0	0	6.5
-----------	----	------	-----	-----	---	-----

CATEGORY	A	B	C	D
RNP (0.30)	NOT APPLICABLE		DA(H) 646' (631)-3.6	
RNP ()	NOT APPLICABLE		DA(H) () - .	
RNP ()	NOT APPLICABLE		DA(H) () - .	
RNP ()	NOT APPLICABLE		DA(H) () - .	
CIRCLING			NOT AUTHORISED	

- NOTES**
- PROC AVBL up to MLW.
 - Lateral transition to MAP must not be initiated prior to DA/H PSN.
 - APCH Path does not coincide with PAPI glide path 3°.
 - Transient yacht masts may infringe RWY 14 visual approach slope clearance.
 - See Engineering Report for Minimum MAP gradient (AE) to 2800 FT.

20201112:1625 COPYRIGHT 2020 NAVERUS, INC. USA

Revision: Removed ATIS 114.4

BHMG03-166

DO NOT USE FOR NAVIGATION

Prepared by GE Aviation

