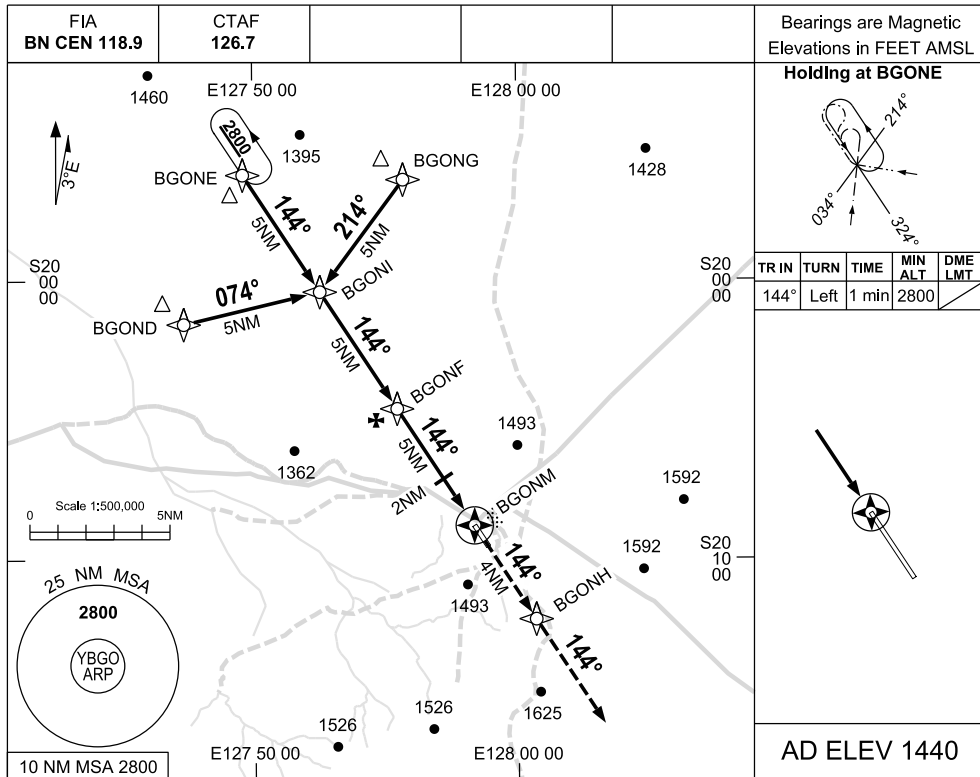


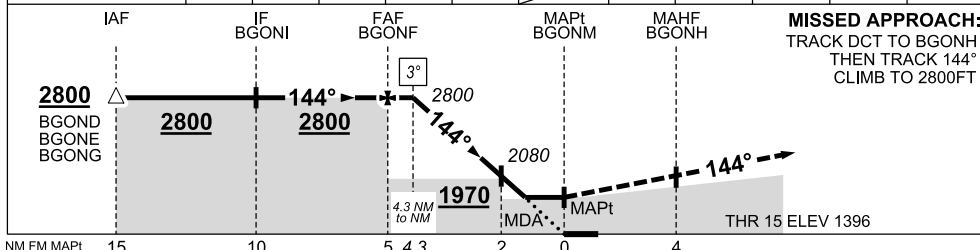
USE QNH

RNAV-Z (GNSS) RWY 15 BALGO HILL, WA (YBGO)

3 MAR 2016



NM TO NEXT WPT	4.3	4	3	2	1.4	BGONM				
ALT (3° APCH PATH)	2800	2720	2400	2080	1890					



Gnd Speed (KTS)	60	70	80	90	100	120	140	160
Desc Rate (fpm) (3°)	320	370	420	480	530	640	740	850

CATEGORY	A	B	C	D
S-I GNSS *	1890 (494-2.7)			NOT APPLICABLE
CIRCLING *	2040 (600-2.4)		2140 (700-4.0)	
ALTERNATE	(1100-4.4)		(1200-6.0)	

- NOTES**
- MAX IAS:
INITIAL 210 KTS
 - TAF NAVBL.
REFER AIP
ENR 1.5
PARA 5.3.4

Changes: New procedure

BGOGN02-146

