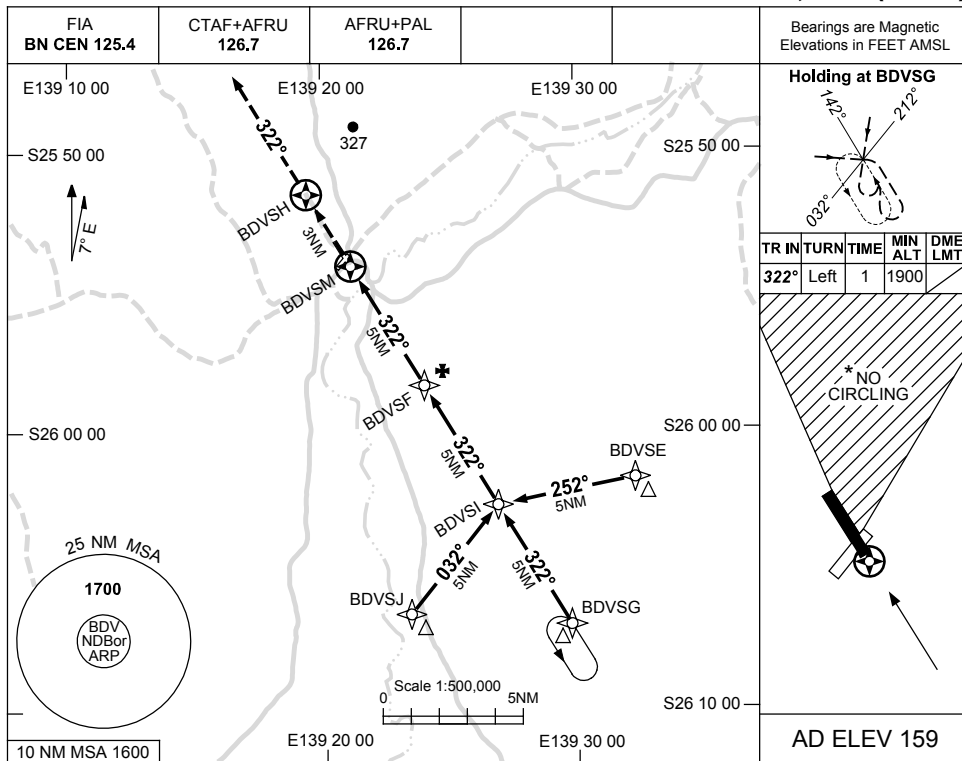


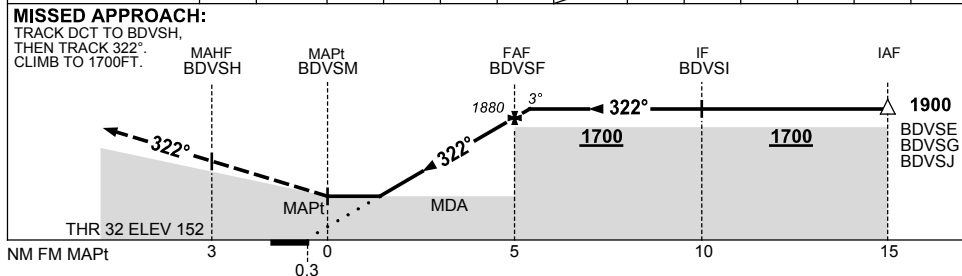
USE QNH

RNAV-Z^(GNSS) RWY 32
BIRDSVILLE, QLD (YBDV)

25 MAY 2017



NM TO NEXT WPT	0.1	BDVSH	4	3	2	1.2	BDVSM					
ALT (3° APCH PATH)	1900	1880	1560	1250	920	680						



NOTES

CATEGORY	A	B	C	D
S-I GNSS	680 (521-3.0)			NOT APPLICABLE
CIRCLING *	800 (641-2.4)	960 (801-4.0)		
ALTERNATE	(1141-4.4)		(1301-6.0)	

- MAX IAS: INITIAL : 210KT.
- NO CIRCLING IN SECTOR NORTH OF RWY 14 AND RWY 21.
- AWIS (PHONE) 07 3007 4153

Changes: AWIS PHONE.

BDVGN02-151