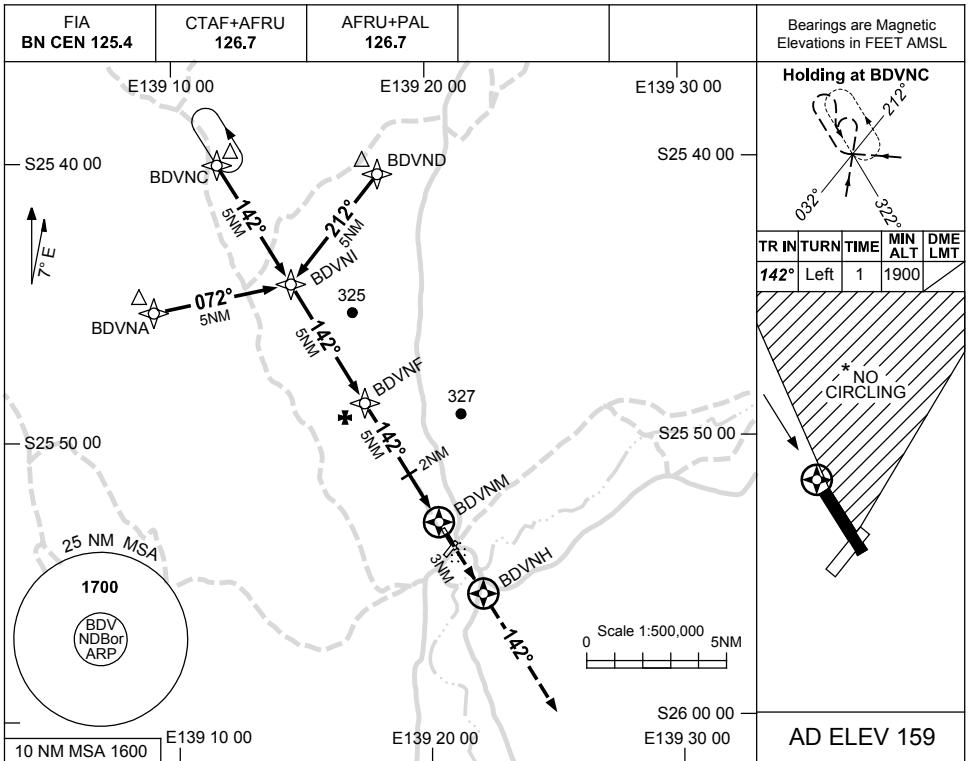


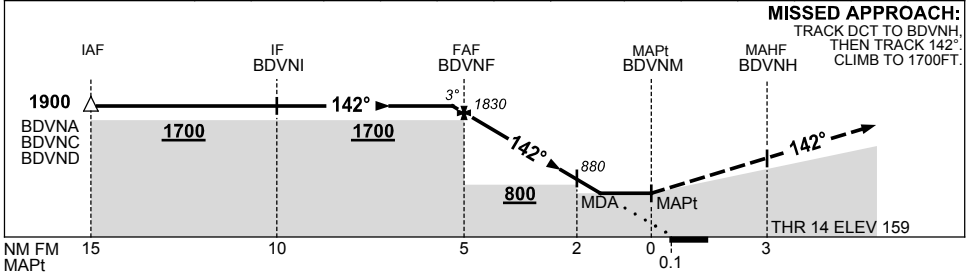
USE QNH

RNAV-Z_(GNSS) RWY 14
BIRDSVILLE, QLD (YBDV)

25 MAY 2017



NM TO NEXT WPT	0.2	BDVNF	4	3	2	1.4	BDVNM						
ALT (3° APCH PATH)	1900	1830	1520	1200	880	680							



NOTES

CATEGORY	A	B	C	D
S-I GNSS	680 (521-3.0)			NOT APPLICABLE
CIRCLING *	800 (641-2.4)		960 (801-4.0)	
ALTERNATE	(1141-4.4)		(1301-6.0)	

1. MAX IAS: INITIAL : 210KT.
- * 2. NO CIRCLING IN SECTOR NORTH OF RWY 14 AND RWY 21.
3. AWIS (PHONE) 07 3007 4153

Changes: AWIS PHONE.

BDVGN01-151