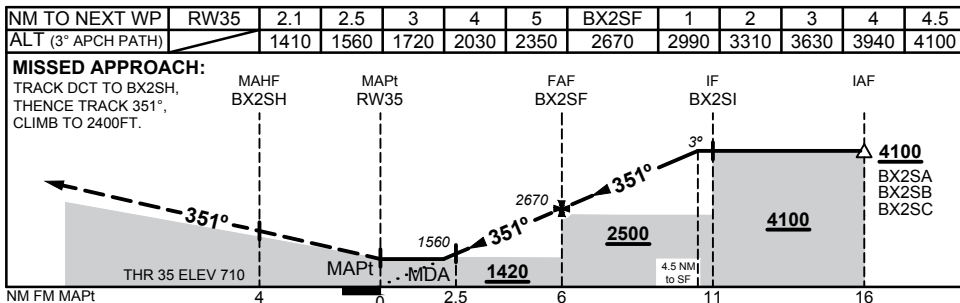
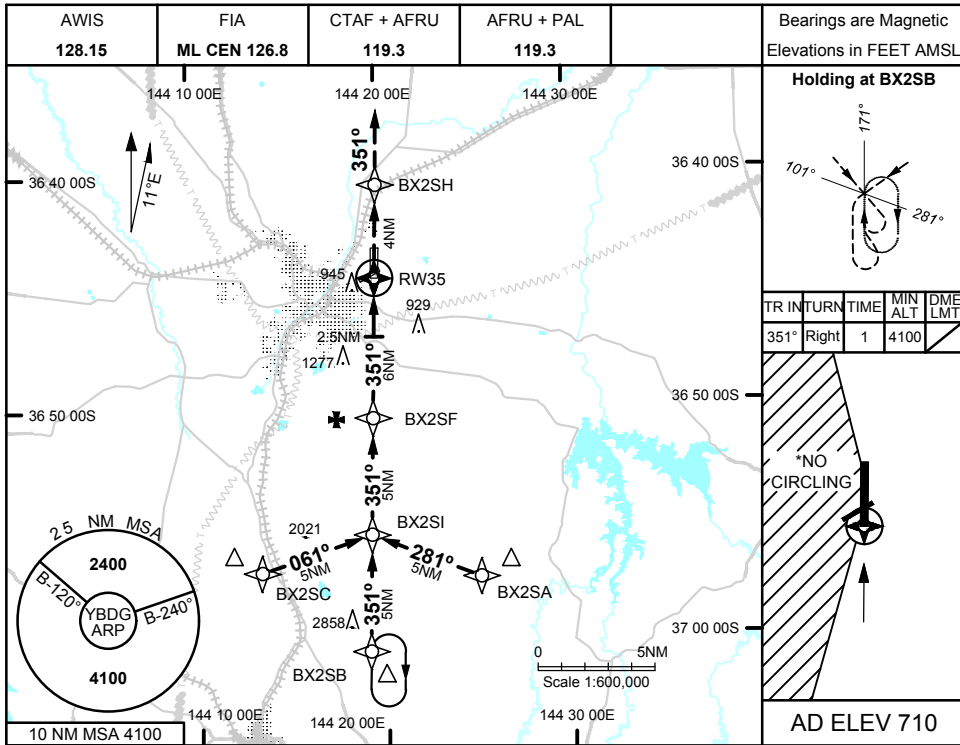


17 JUN 2021



**NOTES**

1. MAX IAS:  
INITIAL : 210KTS
- \*2. NO CIRCLING WEST OF RWY 17/35

CATEGORY	A	B	C	D
LNAV	<b>1410 (700 - 4.0)</b>			NOT APPLICABLE
CIRCLING*	<b>1460 (750 - 2.4)</b>	<b>1790 (1080 - 4.0)</b>		
ALTERNATE	<b>(1250 - 4.4)</b>		<b>(1580 - 6.0)</b>	

Changes: WPT IDENTS, ALTERNATE MINIMA CAT A/B

BDGGN02-167

