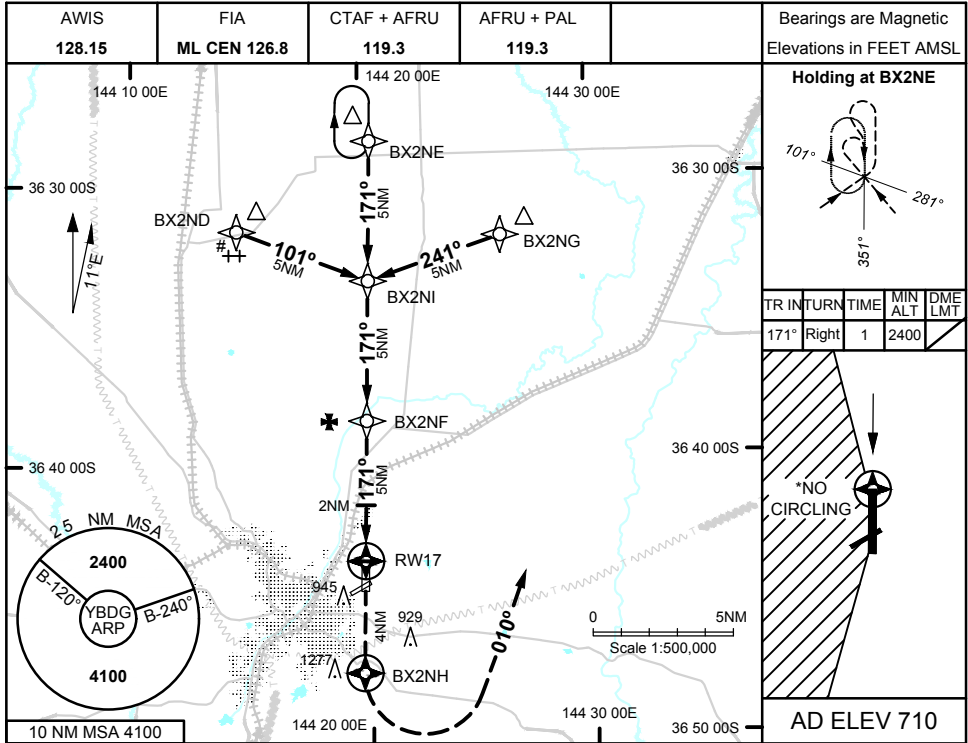
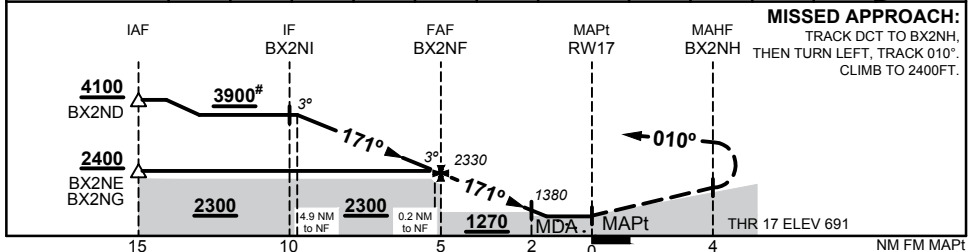


17 JUN 2021



NM TO NEXT WP	4.9	4	3	2	1	0.2	BX2NF	4	3	2	1.4	RW17
ALT (3° APCH PATH)	3900	3610	3290	2970	2650	2400	2330	2010	1700	1380	1190	



**NOTES**

1. MAX IAS:  
INITIAL : 210KTS
- \*2.NO CIRCLING WEST OF RWY 17/35
- \*3.GLIDING OPS IN VCY OF BX2ND IN VMC. FM BX2ND CROSS BX2NI AT OR ABV 3900FT

CATEGORY	A	B	C	D
LNAV	<b>1190 (499 - 2.8)</b>			NOT APPLICABLE
CIRCLING*	<b>1460 (750 - 2.4)</b>		<b>1790 (1080 - 4.0)</b>	
ALTERNATE	<b>(1250 - 4.4)</b>		<b>(1580 - 6.0)</b>	

Changes: WPT IDENTs, ALTERNATE MINIMA CAT A/B

BDGGN01-167

