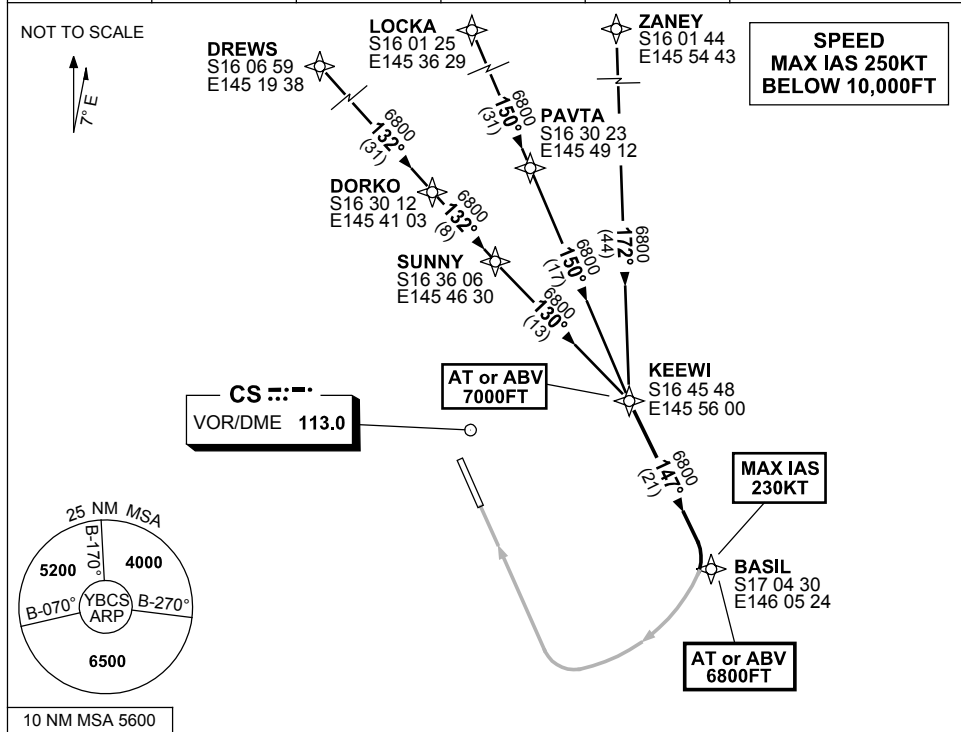


**STANDARD INSTRUMENT ARRIVAL (STAR)
KEEWI ONE YANKEE ARRIVAL (RNAV)
CAIRNS, QLD (YBCS)**

1 MAR 2018

ATIS 113.0 131.1	APP 118.4 126.1	TWR 124.9	SMC 121.7		Bearings are Magnetic Elevations in FEET AMSL
---------------------	--------------------	--------------	--------------	--	--



TRANSITIONS:

- ZANEY:**
 - From ZANEY track 172° to KEEWI
- LOCKA:**
 - From LOCKA track 150° to PAVTA
 - Track 150° to KEEWI
- DREWS:**
 - From DREWS track 132° to DORKO
 - Track 132° to SUNNY
 - Track 130° to KEEWI

FOLLOW ARRIVAL INSTRUCTIONS

ARRIVAL: KEEWI ONE

- RWY 33 YANKEE:**
- **Cross** KEEWI AT or ABV 7000FT
 - From KEEWI track 147° to BASIL, thence via RNAV-Y (RNP) RWY 33
 - **Cross** BASIL AT or ABV 6800FT
 - MAX IAS 230KT from BASIL

**COMMUNICATIONS FAILURE: PROCEDURE IN IMC
IF ABLE CTC CS ATC ON TEL: (07) 3866 3533**

- Squawk 7600, comply with vertical navigation requirements, but not below MSA.
- Track via the latest STAR clearance to the nominated runway, then fly the most suitable approach in accordance with ERS A EMERG Section 1.5.

Changes: PROC NUMBER, MINIMUM SEGMENT ALT, WAYPOINTS.

BCSSR17-154