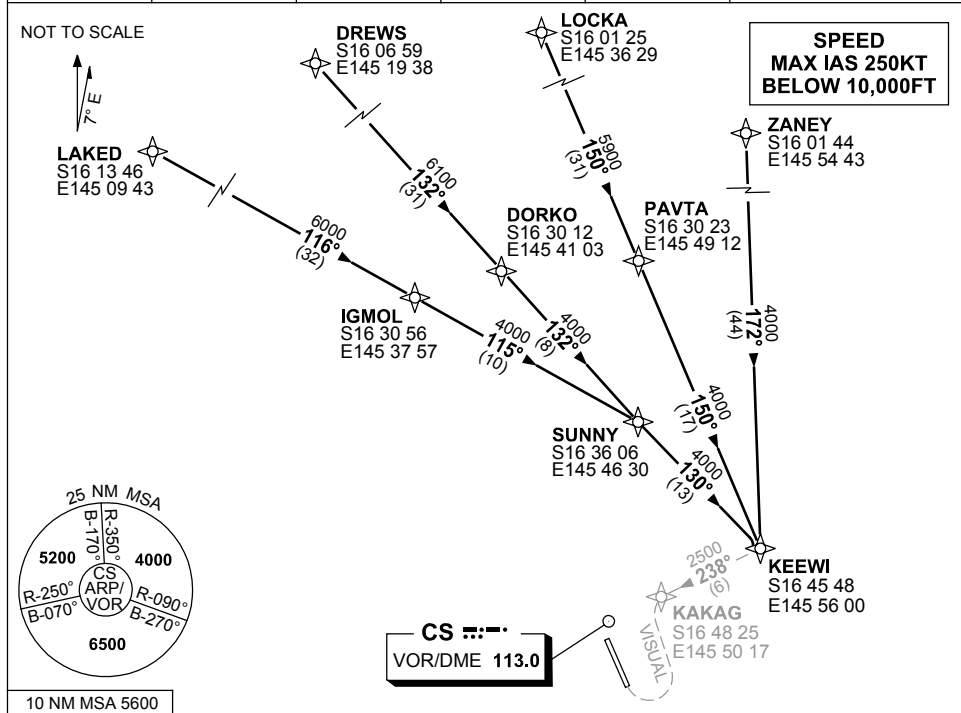


**STANDARD INSTRUMENT ARRIVAL (STAR)
KEEWI ONE VICTOR ARRIVAL (RNAV)
CAIRNS, QLD (YBCS)**

1 MAR 2018

ATIS 113.0 131.1	APP 118.4 126.1	TWR 124.9	SMC 121.7		Bearings are Magnetic Elevations in FEET AMSL
---------------------	--------------------	--------------	--------------	--	--



TRANSITIONS:

- ZANEY:**
 - From ZANEY track 172° to KEEWI
- LOCKA:**
 - From LOCKA track 150° to PAVTA
 - Track 150° to KEEWI
- DREWS:**
 - From DREWS track 132° to DORKO
 - Track 132° to SUNNY
 - Track 130° to KEEWI
- LAKED:**
 - From LAKED track 116° to IGMOL
 - Track 115° to SUNNY
 - Track 130° to KEEWI

FOLLOW ARRIVAL INSTRUCTIONS

ARRIVAL: **KEEWI ONE**

RWY 33 VICTOR: Turn RIGHT, track 238° to KAKAG.
At KAKAG turn LEFT track for RIGHT base RWY 33.

**COMMUNICATIONS FAILURE: PROCEDURE IN IMC
IF ABLE CTC CS ATC ON TEL: (07) 3866 3533**

- Squawk 7600, comply with vertical navigation requirements, but not below MSA.
- Track via the latest STAR clearance to the nominated runway, then fly the most suitable approach in accordance with ERSA EMERG Section 1.5.

Changes: PROC NUMBER, WAYPOINTS, TRACKS.

BCSSR16-154