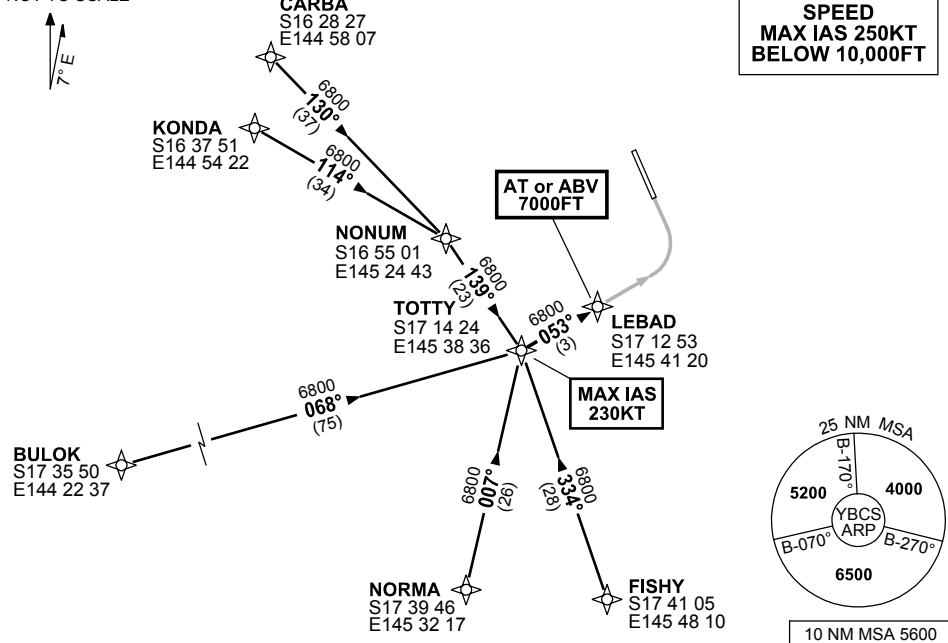


**STANDARD INSTRUMENT ARRIVAL (STAR)
TOTTY FOUR WHISKEY ARRIVAL (RNAV)
CAIRNS, QLD (YBCS)**

9 NOV 2017

ATIS 113.0 131.1	APP 118.4 126.1	TWR 124.9	SMC 121.7		Bearings are Magnetic Elevations in FEET AMSL
---------------------	--------------------	--------------	--------------	--	--

NOT TO SCALE



TRANSITIONS:

- CARBA:** From CARBA to TOTTY
- Track 130° to NONUM,
 - Turn RIGHT, track 139° to TOTTY
- KONDA:** From KONDA to TOTTY
- Track 114° to NONUM,
 - Turn RIGHT, track 139° to TOTTY

- BULOK:** From BULOK to TOTTY
- Track 068° to TOTTY
- NORMA:** From NORMA to TOTTY
- Track 007° to TOTTY
- FISHY:** From FISHY to TOTTY
- Track 334° to TOTTY

FOLLOW ARRIVAL INSTRUCTIONS

ARRIVAL: TOTTY FOUR

RWY 33 WHISKEY: From TOTTY track 053° to LEBAD, thence via RNAV-W (RNP) RWY 33
MAX IAS 230KT from TOTTY

**COMMUNICATIONS FAILURE: PROCEDURE IN IMC
IF ABLE CTC CS ATC ON TEL: (07) 3866 3533**

- Squawk 7600, comply with vertical navigation requirements, but not below MSA.
- Track via the latest STAR clearance to the nominated runway, then fly the most suitable approach in accordance with ERSA EMERG Section 1.5.

Changes: CHART NAME.

BCSSR15-153