

**STANDARD INSTRUMENT ARRIVAL (STAR)
 UPOLO EIGHT X-RAY ARRIVAL (RNAV)
 CAIRNS, QLD (YBCS)**

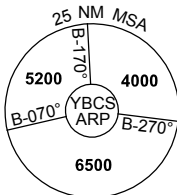
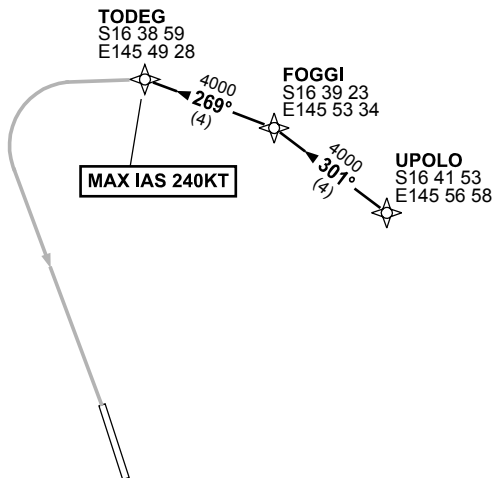
1 MAR 2018

ATIS 113.0 131.1	APP 118.4 126.1	TWR 124.9	SMC 121.7		Bearings are Magnetic Elevations in FEET AMSL
---------------------	--------------------	--------------	--------------	--	--

NOT TO SCALE



**SPEED
 MAX IAS 250KT
 BELOW 10,000FT**



10 NM MSA 5600

ARRIVAL:

UPOLO EIGHT

RWY 15 X-RAY:

- From UPOLO track 301° to FOGGI,
- Track 269° to TODEG,
 thence via RNAV-X (RNP) RWY 15
 MAX IAS 240KT from TODEG

**COMMUNICATIONS FAILURE: PROCEDURE IN IMC
 IF ABLE CTC CS ATC ON TEL: (07) 3866 3533**

- Squawk 7600, comply with vertical navigation requirements, but not below MSA.
- Track via the latest STAR clearance to the nominated runway, then fly the most suitable approach in accordance with ERSA EMERG Section 1.5.