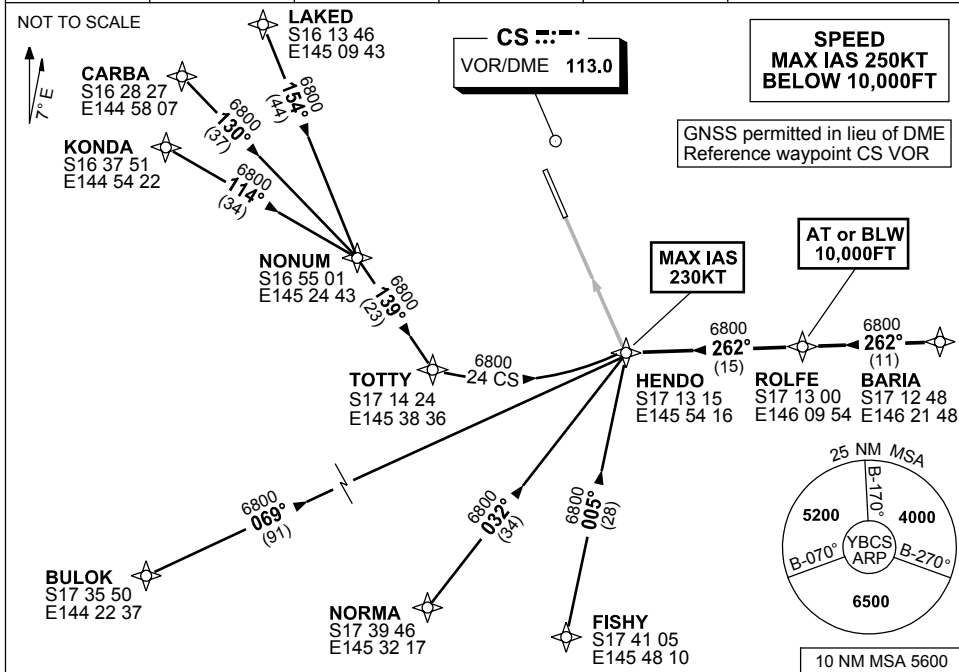


**STANDARD INSTRUMENT ARRIVAL (STAR)  
HENDO EIGHT YANKEE ARRIVAL (RNAV)  
CAIRNS, QLD (YBCS)**

**9 NOV 2017**

ATIS 113.0 131.1	APP 118.4 126.1	TWR 124.9	SMC 121.7	Bearings are Magnetic Elevations in FEET AMSL
---------------------	--------------------	--------------	--------------	--



**TRANSITIONS:**

**LAKED:** From LAKED to HENDO

- Track 154° to NONUM,
- Turn LEFT, track 139° to TOTTY,
- Thence 24 CS arc to HENDO.

**CARBA:** From CARBA to HENDO

- Track 130° to NONUM,
- Turn RIGHT, track 139° to TOTTY,
- Thence 24 CS arc to HENDO.

**KONDA:** From KONDA to HENDO

- Track 114° to NONUM,
- Turn RIGHT, track 139° to TOTTY,
- Thence 24 CS arc to HENDO.

**BULOK:** From BULOK to HENDO

- Track 069° to HENDO.

**NORMA:** From NORMA to HENDO

- Track 032° to HENDO.

**FISHY:** From FISHY to HENDO

- Track 005° to HENDO.

**BARIA:** From BARIA to HENDO

- Track 262° to ROLFE.
- **Cross** ROLFE AT or BLW 10,000FT.
- Track 262° to HENDO.

**FOLLOW ARRIVAL INSTRUCTIONS**

**ARRIVAL:** HENDO EIGHT

**RWY 33 YANKEE:** From HENDO track via RNAV-Y (RNP) RWY 33.  
MAX IAS 230KT from HENDO

**COMMUNICATIONS FAILURE: PROCEDURE IN IMC  
IF ABLE CTC CS ATC ON TEL: (07) 3866 3533**

- Squawk 7600, comply with vertical navigation requirements, but not below MSA.
- Track via the latest STAR clearance to the nominated runway, then fly the most suitable approach in accordance with ERSA EMERG Section 1.5.