

**STANDARD INSTRUMENT ARRIVAL (STAR)
NONUM THREE WHISKEY ARRIVAL (RNAV)
CAIRNS/CAIRNS INTL, QLD (YBCS)**

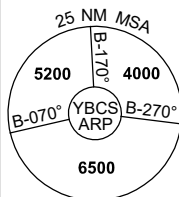
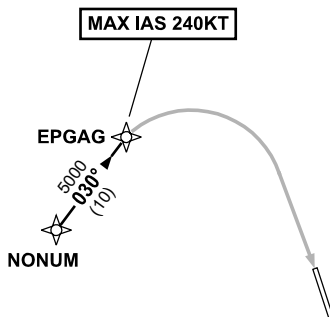
24 MAR 2022

ATIS 113.0 131.1	APP 118.4 126.1	TWR 124.9	SMC 121.7		Bearings are Magnetic Elevations in FEET AMSL
---------------------	--------------------	--------------	--------------	--	--

NOT TO SCALE



**SPEED
MAX IAS 250KT
BELOW 10,000ft**



10 NM MSA 5600

ARRIVAL:

NONUM THREE

RWY 15 WHISKEY:

- From NONUM track 030° to EPGAG
- From EPGAG track via RNP W RWY 15 (AR)
MAX IAS 240KT from EPGAG

**COMMUNICATIONS FAILURE: PROCEDURE IN IMC
IF ABLE CTC CS ATC ON TEL: (07) 3866 3533**

- Squawk 7600, comply with vertical navigation requirements, but not below MSA.
- Track via the latest STAR clearance to the nominated runway, then fly the most suitable approach in accordance with ERSA EMERG Section 1.5.

Changes: Editorial.

BCSSR09-170