

**STANDARD INSTRUMENT ARRIVAL (STAR)  
NONUM THREE WHISKEY ARRIVAL (RNAV)  
CAIRNS, QLD (YBCS)**

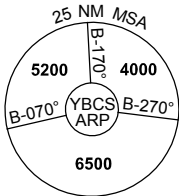
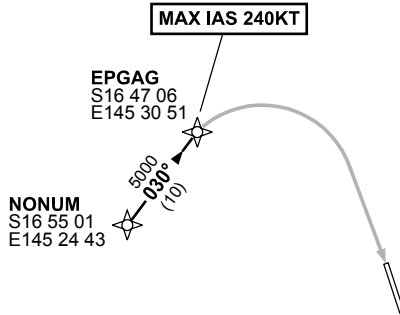
**1 MAR 2018**

ATIS 113.0 131.1	APP 118.4 126.1	TWR 124.9	SMC 121.7		Bearings are Magnetic Elevations in FEET AMSL
---------------------	--------------------	--------------	--------------	--	--

NOT TO SCALE



**SPEED  
MAX IAS 250KT  
BELOW 10,000FT**



10 NM MSA 5600

**ARRIVAL: NONUM THREE**

- RWY 15 WHISKEY:**
- From NONUM track 030° to EPGAG
  - From EPGAG track via RNAV-W (RNP) RWY 15  
MAX IAS 240KT from EPGAG

**COMMUNICATIONS FAILURE: PROCEDURE IN IMC  
IF ABLE CTC CS ATC ON TEL: (07) 3866 3533**

- Squawk 7600, comply with vertical navigation requirements, but not below MSA.
- Track via the latest STAR clearance to the nominated runway, then fly the most suitable approach in accordance with ERSA EMERG Section 1.5.