

**STANDARD INSTRUMENT ARRIVAL (STAR)
UPOLO EIGHT ALPHA, BRAVO, VICTOR, ZULU ARRIVALS (RNAV)
CAIRNS, QLD (YBCS)**

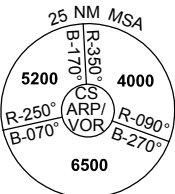
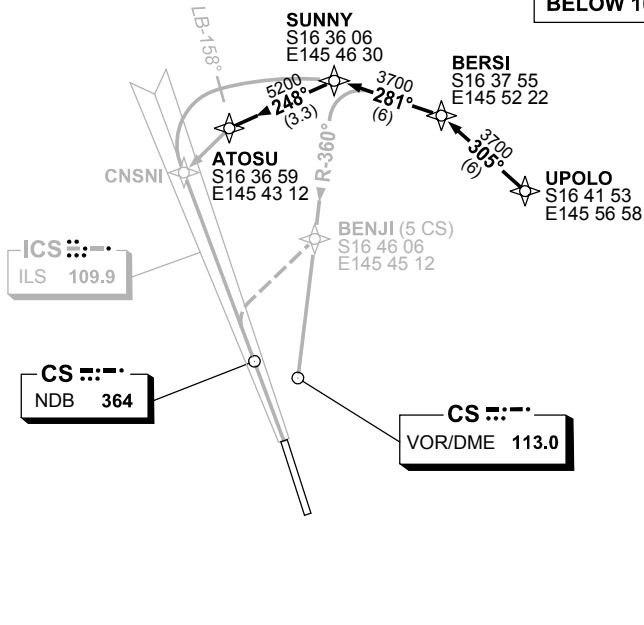
1 MAR 2018

ATIS 113.0 131.1	APP 118.4 126.1	TWR 124.9	SMC 121.7		Bearings are Magnetic Elevations in FEET AMSL
---------------------	--------------------	--------------	--------------	--	--

NOT TO SCALE



**SPEED
MAX IAS 250KT
BELOW 10,000FT**



10 NM MSA 5600

ARRIVAL:

UPOLO EIGHT

- From UPOLO, track 305° to BERSI,
- Turn LEFT, track 281° to SUNNY.

RWY 15 ALPHA:

- From SUNNY, track via CS 15 DME arc for ILS or LOC RWY 15

RWY 15 BRAVO:

- From SUNNY, track via NDB-A or VOR-A

RWY 15 VICTOR:

- From SUNNY, track 180° VISUAL to BENJI thence track via "Creek Corridor" (Cairns NAP refers)

RWY 15 ZULU:

- From SUNNY, track 248° to ATOSU for RNAV-Y (GNSS) RWY 15 or RNAV-Z (GNSS) RWY 15

**COMMUNICATIONS FAILURE: PROCEDURE IN IMC
IF ABLE CTC CS ATC ON TEL: (07) 3866 3533**

- Squawk 7600, comply with vertical navigation requirements, but not below MSA.
- Track via the latest STAR clearance to the nominated runway, then fly the most suitable approach in accordance with ERSA EMERG Section 1.5.

Changes: TRACKS, WAYPOINTS, PROC NUMBER.

BCSSR08-154