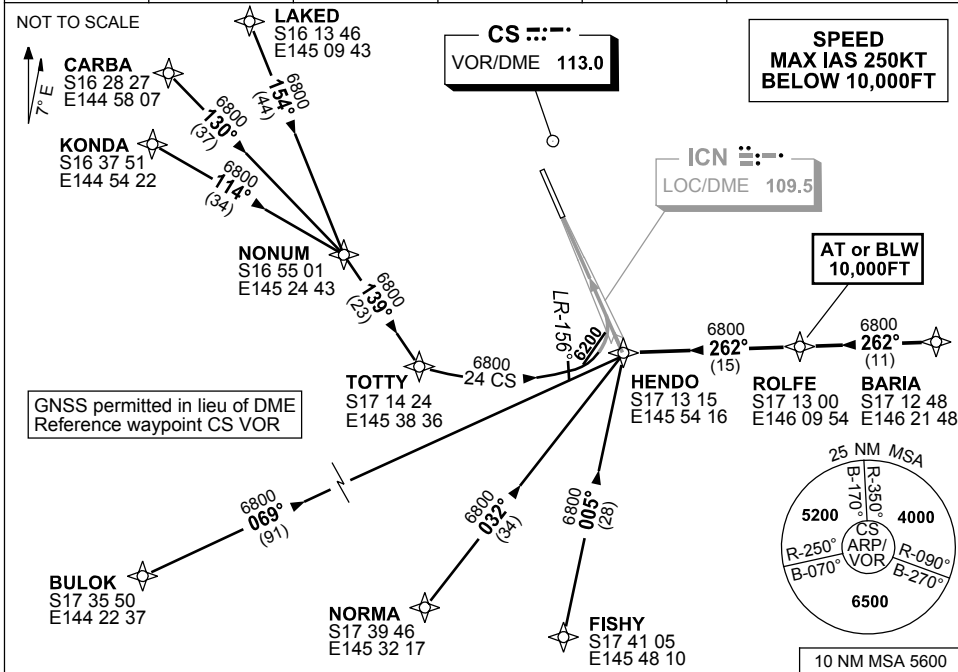


**STANDARD INSTRUMENT ARRIVAL (STAR)
HENDO EIGHT ALPHA ARRIVAL (RNAV)
CAIRNS, QLD (YBCS)**

9 NOV 2017

ATIS 113.0 131.1	APP 118.4 126.1	TWR 124.9	SMC 121.7	Bearings are Magnetic Elevations in FEET AMSL
---------------------	--------------------	--------------	--------------	--



TRANSITIONS:

- LAKED:** From LAKED to HENDO
- Track 154° to NONUM,
 - Turn LEFT, track 139° to TOTTY,
 - Thence 24 CS arc to HENDO.
- CARBA:** From CARBA to HENDO
- Track 130° to NONUM,
 - Turn RIGHT, track 139° to TOTTY,
 - Thence 24 CS arc to HENDO.
- KONDA:** From KONDA to HENDO
- Track 114° to NONUM,
 - Turn RIGHT, track 139° to TOTTY,
 - Thence 24 CS arc to HENDO.

- BULOK:** From BULOK to HENDO
- Track 069° to HENDO.
- NORMA:** From NORMA to HENDO
- Track 032° to HENDO.
- FISHY:** From FISHY to HENDO
- Track 005° to HENDO.
- BARIA:** From BARIA to HENDO
- Track 262° to ROLFE.
 - **Cross** ROLFE AT or BLW 10,000FT
 - Track 262° to HENDO.

FOLLOW ARRIVAL INSTRUCTIONS

- ARRIVAL:** HENDO EIGHT
- RWY 33 ALPHA:** From HENDO intercept LOC RWY 33.

**COMMUNICATIONS FAILURE: PROCEDURE IN IMC
IF ABLE CTC CS ATC ON TEL: (07) 3866 3533**

- Squawk 7600, comply with vertical navigation requirements, but not below MSA.
- Track via the latest STAR clearance to the nominated runway, then fly the most suitable approach in accordance with ERS A EMERG Section 1.5.