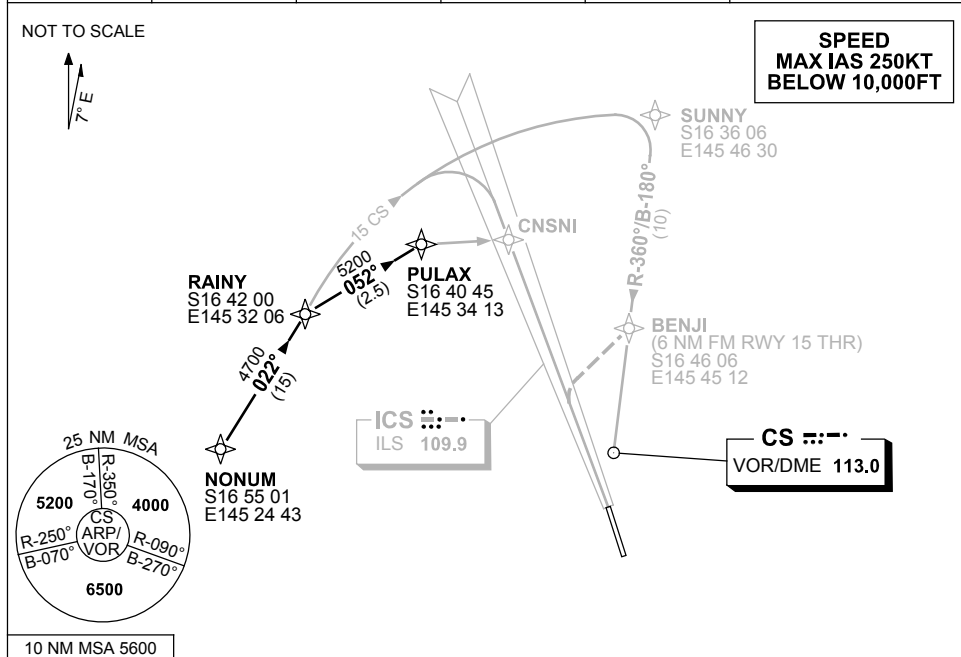


**STANDARD INSTRUMENT ARRIVAL (STAR)
NONUM THREE ALPHA, BRAVO, VICTOR, ZULU ARRIVALS (RNAV)
CAIRNS, QLD (YBCS)**

1 MAR 2018

ATIS 113.0 131.1	APP 118.4 126.1	TWR 124.9	SMC 121.7		Bearings are Magnetic Elevations in FEET AMSL
---------------------	--------------------	--------------	--------------	--	--



ARRIVAL:	NONUM THREE ALPHA
RWY 15:	From NONUM track 022° to RAINY From RAINY track via CS 15 DME arc for ILS or LOC RWY 15
ARRIVAL:	NONUM THREE BRAVO
RWY 15:	From NONUM track 022° to RAINY, thence via CS 15 DME arc to SUNNY for NDB-A or VOR-A
ARRIVAL:	NONUM THREE VICTOR
RWY 15:	From NONUM track 022° to RAINY, thence via CS 15 DME arc to SUNNY. From SUNNY track 180° to BENJI thence VISUAL track via "Creek Corridor" (Cairns NAP refers)
ARRIVAL:	NONUM THREE ZULU
RWY 15:	From NONUM track 022° to RAINY Turn RIGHT, track 052° to PULAX for RNAV-Y (GNSS) RWY 15 or RNAV-Z (GNSS) RWY 15

**COMMUNICATIONS FAILURE: PROCEDURE IN IMC
IF ABLE CTC CS ATC ON TEL: (07) 3866 3533**

- Squawk 7600, comply with vertical navigation requirements, but not below MSA.
- Track via the latest STAR clearance to the nominated runway, then fly the most suitable approach in accordance with ERS A EMERG Section 1.5.

Changes: WAYPOINT PULAX, PROC NUMBER.

BCSSR03-154