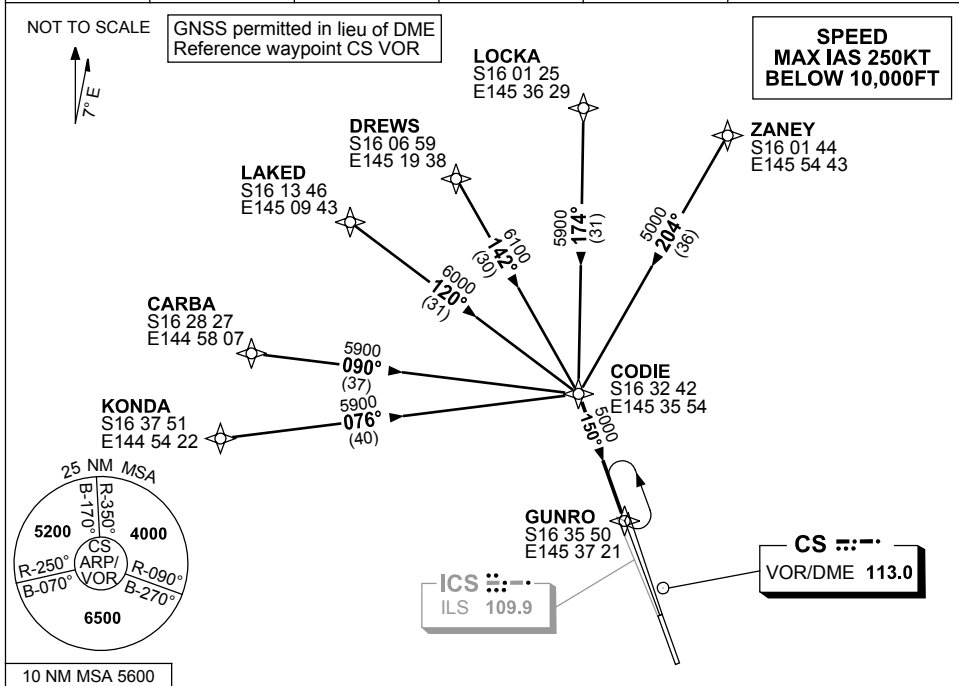


**STANDARD INSTRUMENT ARRIVAL (STAR)
CODIE SEVEN ALPHA ARRIVAL (RNAV)
CAIRNS, QLD (YBCS)**

9 NOV 2017

ATIS 113.0 131.1	APP 118.4 126.1	TWR 124.9	SMC 121.7		Bearings are Magnetic Elevations in FEET AMSL
---------------------	--------------------	--------------	--------------	--	--



TRANSITIONS:

- ZANEY:** From ZANEY track 204° to CODIE
- LOCKA:** From LOCKA track 174° to CODIE
- DREWS:** From DREWS track 120° to CODIE
- LAKED:** From LAKED track 120° to CODIE
- CARBA:** From CARBA track 090° to CODIE
- KONDA:** From KONDA track 076° to CODIE

FOLLOW ARRIVAL INSTRUCTIONS

ARRIVAL: CODIE SEVEN

- RWY 15 ALPHA:**
- From CODIE track 150° to GUNRO
 - Track via ILS RWY 15 or LOC RWY 15

**COMMUNICATIONS FAILURE: PROCEDURE IN IMC
IF ABLE CTC CS ATC ON TEL: (07) 3866 3533**

- Squawk 7600, comply with vertical navigation requirements, but not below MSA.
- Track via the latest STAR clearance to the nominated runway, then fly the most suitable approach in accordance with ERS A EMERG Section 1.5.

Changes: CHART NAME.

BCSSR01-153