

STANDARD INSTRUMENT DEPARTURES (SID)
 RWY 33 EAZEE TWO (JET)
 CAIRNS, QLD (YBCS)

9 NOV 2017

ATIS 113.0 131.1	ACD 128.75	SMC 121.7	TWR 124.9	DEP 118.4	DEP 126.1 (AS ADVISED)	Bearings are Magnetic Elevations in FEET AMSL
---------------------	---------------	--------------	--------------	--------------	---------------------------	--

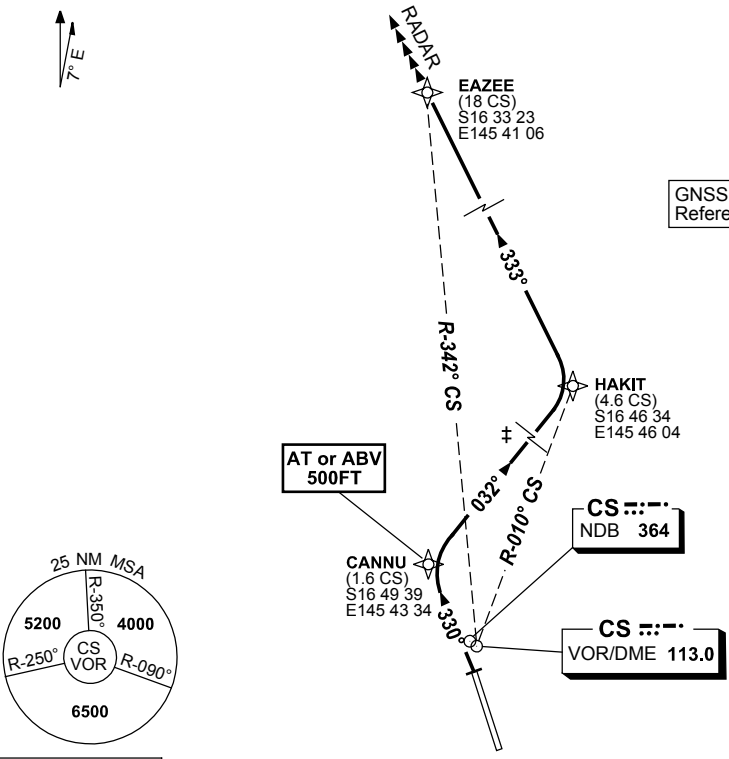
NOT TO SCALE



**SPEED
 MAX IAS 250KT
 BELOW 10,000FT**

**± SPEED
 MAX IAS 200KT
 UNTIL HAKIT**

GNSS permitted in lieu of DME
 Reference waypoint CS VOR



10 NM MSA 5600

RWY 33 EAZEE TWO

- GRAD 4.6% TO 2000FT THENCE 3.3%
 MAX IAS 220KT until HAKIT
- Track 330° to CANNU
Cross CANNU AT or ABV 500FT
- Turn RIGHT track 032° to HAKIT
- Turn LEFT, track 333° to EAZEE
- When directed Contact Departures

TRANSITION

- RADAR: From EAZEE expect radar vectors to cleared route