

**STANDARD INSTRUMENT DEPARTURE (SID)  
RWY 15 NONUM ONE (NON-JET)  
CAIRNS, QLD (YBCS)**

**9 NOV 2017**

ATIS 113.0 131.1	ACD 128.75	SMC 121.7	TWR 124.9	DEP 118.4	DEP 126.1 (AS ADVISED)	Bearings are Magnetic Elevations in FEET AMSL
---------------------	---------------	--------------	--------------	--------------	---------------------------	--

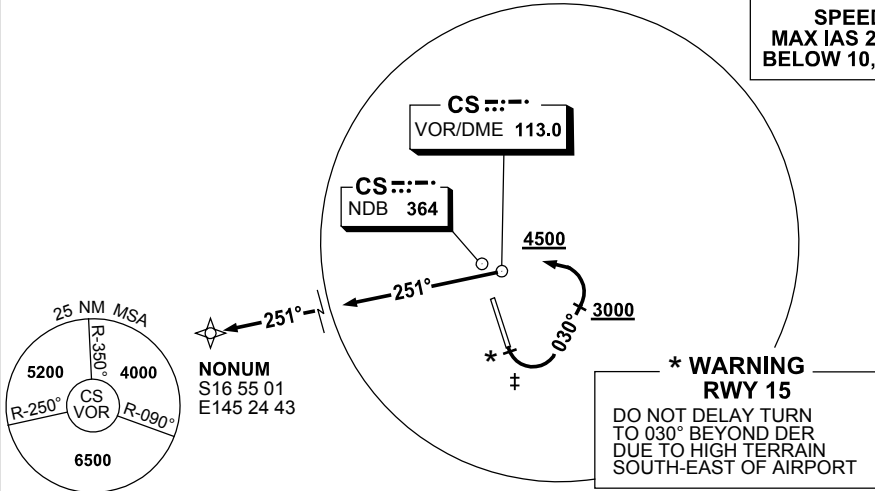
NOT TO SCALE



GNSS permitted in lieu of DME  
Reference waypoint CS VOR

‡ **SPEED AND BANK ANGLE**  
**THE FOLLOWING LIMITS ARE RQ UNTIL TRACKING 030°**  
1. MAX IAS 190KT  
2. MIN 25° BANK

**SPEED**  
**MAX IAS 250KT**  
**BELOW 10,000FT**



10 NM MSA 5600

**NONUM ONE DEPARTURE**

- GRAD 4% to 600FT thence 3.3%
- Track 150°
- \* At the earlier of 400FT or DER (2.6 CS DME) turn LEFT track 030°
- At or above 3000FT turn LEFT
- Track to CS VOR/NDB

Requirement: reach 4500FT by CS VOR/NDB

- Track 251° to NONUM