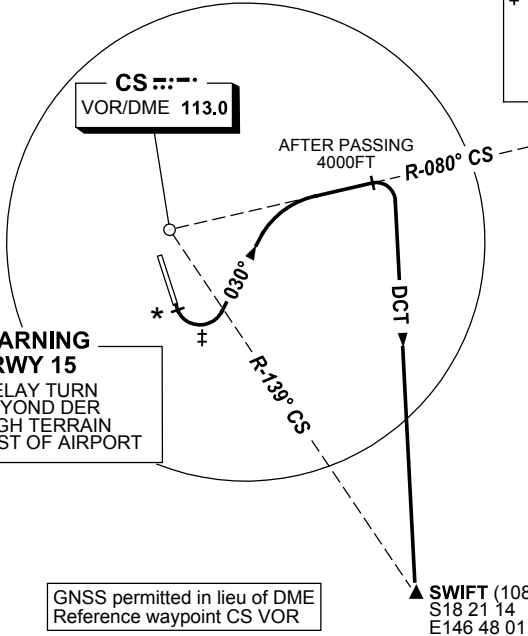


**STANDARD INSTRUMENT DEPARTURE (SID)  
RWY 15 SWIFT EIGHT (JET)  
CAIRNS, QLD (YBCS)**

**9 NOV 2017**

ATIS 113.0 131.1	ACD 128.75	SMC 121.7	TWR 124.9	DEP 118.4	DEP 126.1 (AS ADVISED)	Bearings are Magnetic Elevations in FEET AMSL
---------------------	---------------	--------------	--------------	--------------	---------------------------	--

NOT TO SCALE

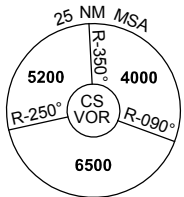


**‡ SPEED AND BANK ANGLE**  
THE FOLLOWING LIMITS ARE RQ UNTIL TRACKING 030°  
1. MAX IAS 190KT  
2. MIN 25° BANK

**SPEED**  
MAX IAS 250KT  
BELOW 10,000FT

**\* WARNING  
RWY 15**  
DO NOT DELAY TURN  
TO 030° BEYOND DER  
DUE TO HIGH TERRAIN  
SOUTH-EAST OF AIRPORT

GNSS permitted in lieu of DME  
Reference waypoint CS VOR



10 NM MSA 5600

**SWIFT (108 CS)**  
S18 21 14  
E146 48 01

**SWIFT EIGHT DEPARTURE**

- GRAD 4% to 600FT thence 3.3%.
- Track 150°
- \* At the earlier of 400FT or DER (2.6 CS DME) turn LEFT track 030°
- Intercept CS R-080°
- When established on CS R-080° and after passing 4000FT turn RIGHT
- Track direct SWIFT and thence as cleared