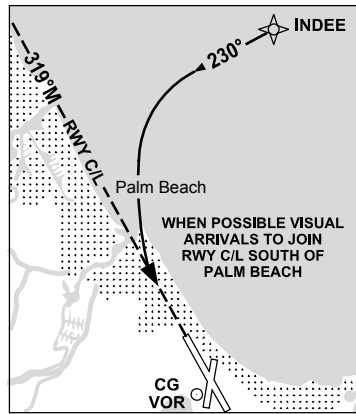


**STANDARD ARRIVAL ROUTE (STAR)
BERNI TWO VICTOR ARRIVAL (RNAV)
GOLD COAST, QLD (YBCG)**

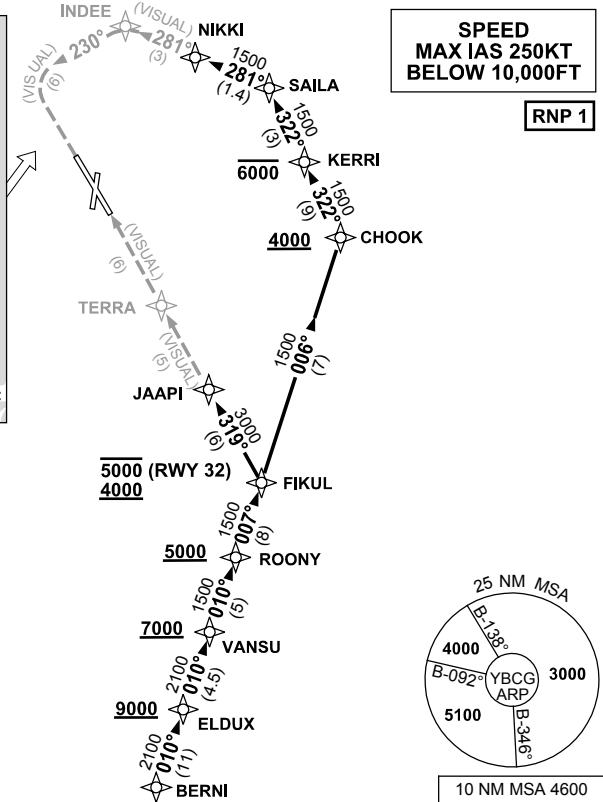
23 MAR 2023

ATIS 112.3 (H24) 134.5 (TWR HR)	APP BN 123.5	TWR 118.7	SMC 121.8	ACD 128.75	FIA (AH) BN CEN 119.5	AWIS (AH) 134.5	CTAF+AFRU (AH) AFRU+PAL (AH) 118.7	Bearings are Magnetic Elevations in FEET AMSL
------------------------------------	-----------------	--------------	--------------	---------------	--------------------------	--------------------	--	--



"RWY 14 VISUAL"

NOT TO SCALE



**SPEED
MAX IAS 250KT
BELOW 10,000FT**

RNP 1

ARRIVAL: BERNI TWO VICTOR

- From BERNI track 010° to ELDUX
Cross ELDUX AT or ABV 9000FT
- Track 010° to VANSU
Cross VANSU AT or ABV 7000FT
- Track 010° to ROONEY
Cross ROONEY AT or ABV 5000FT

RWY 32:

- From ROONEY, turn LEFT track 007° to FIKUL
Cross FIKUL BTN 4000FT and 5000FT
- Turn LEFT, track 319° to JAAPI
- Track VISUAL to TERRA
- Report RWY in sight for approach instructions

RWY 14:

- From ROONEY, turn LEFT track 007° to FIKUL
- Turn LEFT, track 006° to CHOOK
Cross CHOOK AT or ABV 4000FT
- Turn LEFT, track 322° to KERRI
Cross KERRI AT or BLW 6000FT
- Track 322° to SAILA
- Turn LEFT track 281° to NIKKI,
- Track 281° VISUAL to INDEE
- Turn LEFT, track 230° to intercept 3NM final RWY 14 (RWY 14 VISUAL)

COMMUNICATIONS FAILURE PROCEDURE

IF ABLE CTC GOLD COAST ATC ON TEL : 07 55995990

- Squawk 7600, comply with vertical navigation requirements, but not below MSA.
- Track via the latest STAR clearance to the nominated runway, then fly the most suitable approach in accordance with ERSA EMERG Section 1.5.

Changes: FIKUL ALT RQMNT, VALIDITY INDICATOR.

BCGSR07-174