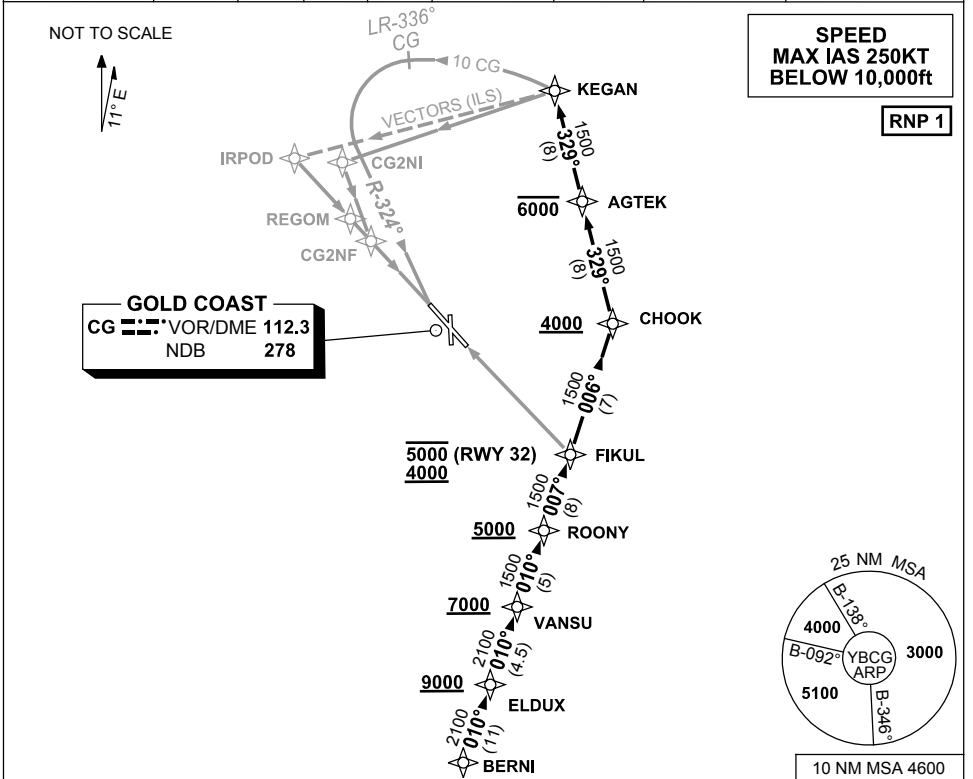


**STANDARD ARRIVAL ROUTE (STAR)
BERNI TWO ALPHA ARRIVAL (RNAV)
GOLD COAST, QLD (YBCG)**

23 MAR 2023

ATIS 112.3 (H24) 134.5 (TWR HR)	APP BN 123.5	TWR 118.7	SMC 121.8	ACD 128.75	FIA (AH) BN CEN 119.5	AWIS (AH) 134.5	CTAF+AFRU (AH) AFRU+PAL (AH) 118.7	Bearings are Magnetic Elevations in FEET AMSL
---------------------------------------	-----------------	--------------	--------------	---------------	--------------------------	--------------------	--	--



ARRIVAL: BERNI TWO ALPHA

- From BERNI track 010° to ELDUX
Cross ELDUX AT or ABV 9000ft
- Track 010° to VANSU
Cross VANSU AT or ABV 7000ft
- Track 010° to ROONY
Cross ROONY AT or ABV 5000ft

RWY 32:

- From ROONY turn LEFT track 007° to FIKUL
Cross FIKUL BTN 4000ft and 5000ft
- Track via RNP X RWY 32 (AR) or RNP Z RWY 32

RWY 14:

- From ROONY turn LEFT track 007° to FIKUL
- Turn LEFT, track 006° to CHOOK
Cross CHOOK AT or ABV 4000ft
- Turn LEFT, track 329° to AGTEK
Cross AGTEK AT or BLW 6000ft
- Track 329° to KEGAN
- Track via RNP Z RWY 14, NDB or VOR RWY 14 or radar vectors for ILS-Z RWY 14 or LOC-Z RWY 14

COMMUNICATIONS FAILURE PROCEDURE

IF ABLE CTC GOLD COAST ATC ON TEL : 07 55995990

- Squawk 7600, comply with vertical navigation requirements, but not below MSA.
- Track via the latest STAR clearance to the nominated runway, then fly the most suitable approach in accordance with ERSA EMERG Section 1.5.

Changes: FIKUL ALT RQMNT, VALIDITY INDICATOR.

BCGSR06-174