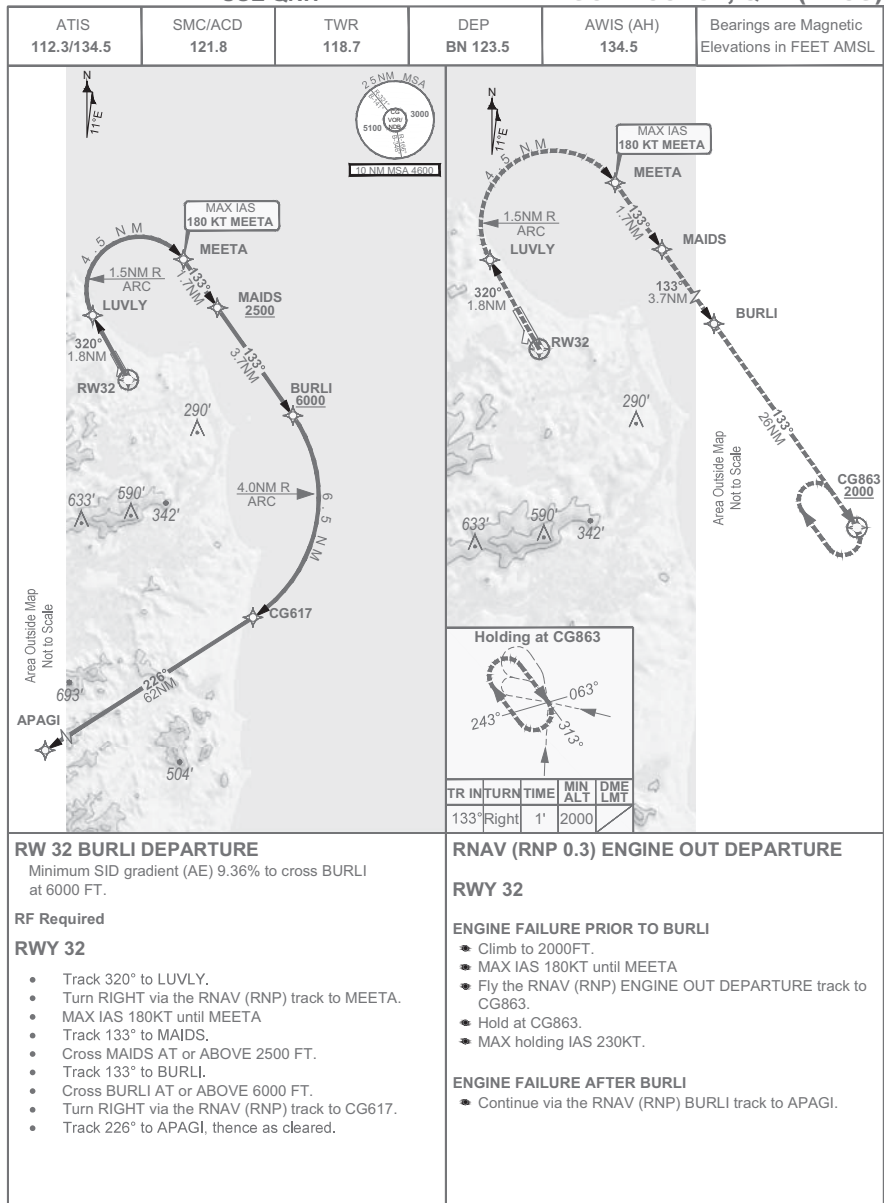


**FOR CASA APPROVED
OPERATORS ONLY
USE QNH**

**STANDARD INSTRUMENT DEPARTURE (SID)
RW32 RNAV (RNP 0.3) BURLI FOUR
GOLD COAST, QLD (YBCG)**



RW 32 BURLI DEPARTURE
Minimum SID gradient (AE) 9.36% to cross BURLI at 6000 FT.

RF Required

RWY 32

- Track 320° to LUVLY.
- Turn RIGHT via the RNAV (RNP) track to MEETA.
- MAX IAS 180KT until MEETA
- Track 133° to MAIDS.
- Cross MAIDS AT or ABOVE 2500 FT.
- Track 133° to BURLI.
- Cross BURLI AT or ABOVE 6000 FT.
- Turn RIGHT via the RNAV (RNP) track to CG617.
- Track 226° to APAGI, thence as cleared.

RNAV (RNP 0.3) ENGINE OUT DEPARTURE

RWY 32

ENGINE FAILURE PRIOR TO BURLI

- Climb to 2000FT.
- MAX IAS 180KT until MEETA
- Fly the RNAV (RNP) ENGINE OUT DEPARTURE track to CG863.
- Hold at CG863.
- MAX holding IAS 230KT.

ENGINE FAILURE AFTER BURLI

- Continue via the RNAV (RNP) BURLI track to APAGI.

Changes: ASA format.



21 AUG 2014

DO NOT USE FOR NAVIGATION
Prepared by Naverus, Inc.

BCGDP03-140