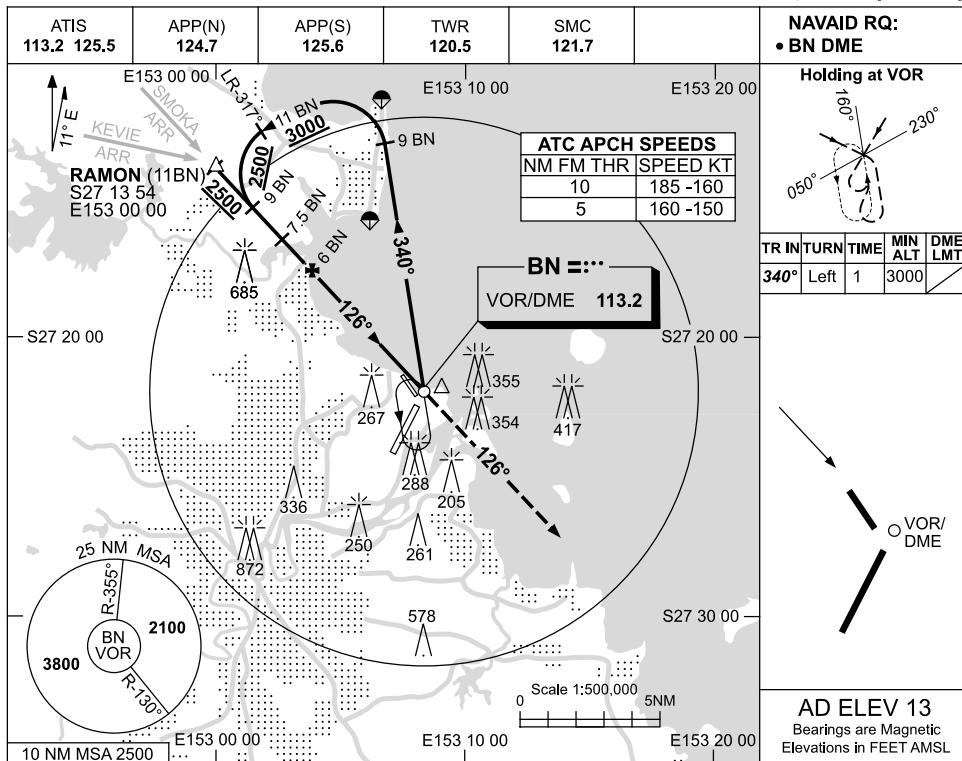


USE QNH

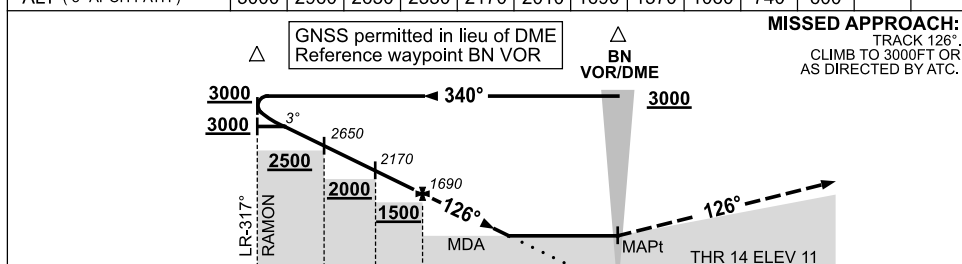
VOR RWY 14

BRISBANE, QLD (YBBN)

12 NOV 2015



DIST FM BN DME	10.1	10	9	8	7.5	7	6	5	4	3	2.6		
ALT (3° APCH PATH)	3000	2960	2650	2330	2170	2010	1690	1370	1060	740	600		



NM FM BN DME      11      9      7.5      6      0

**NOTES**

CATEGORY	A	B	C	D
S-I VOR/DME	<b>600 (587-3.3)</b>			
CIRCLING	<b>650 (637-2.4)</b>		<b>780 (767-4.0)</b>	<b>850 (837-5.0)</b>
ALTERNATE*	<b>(1137-4.4)</b>		<b>(1267-6.0)</b>	<b>(1337-7.0)</b>

- \*1. SPECIAL ALTN MNM NOT APPLICABLE.
- 2. ACFT MAY BE RADAR VECTORED TO FNA.

Changes: MSA, PROC MNM, CIRCLING MNM.

BBNVO02-145