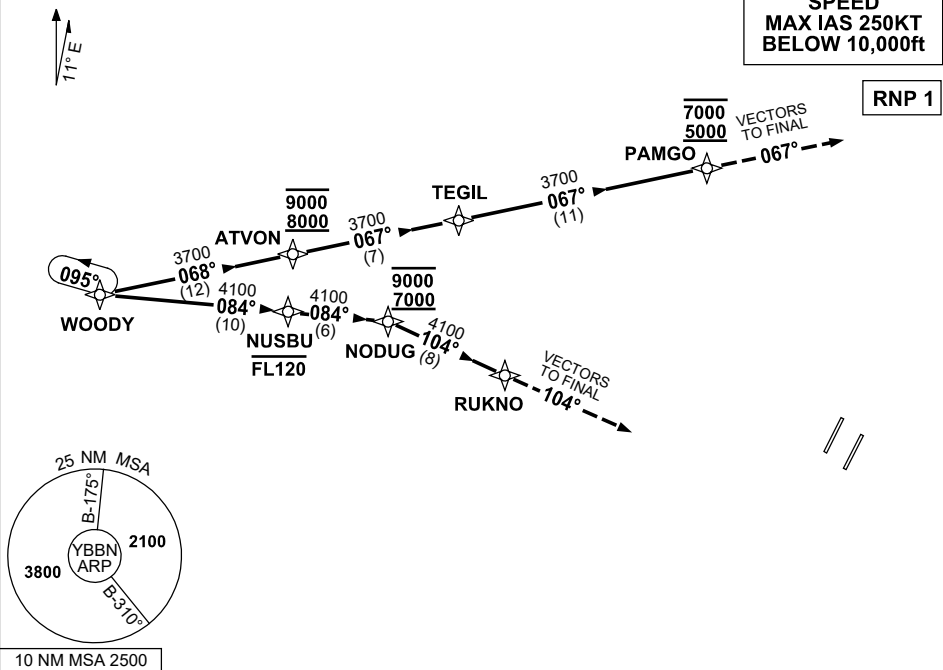


**STANDARD INSTRUMENT ARRIVAL (STAR)  
WOODY ONE VICTOR ARRIVAL (RNAV) RWY 01L/19R  
BRISBANE, QLD (YBBN)**

**16 JUN 2022**

ATIS 113.2 125.5	APP NORTH SOUTH FINALS 124.7 125.6 119.25	TWR 01L/19R 118.0 01R/19L 120.5	NORTH 124.05	SMC DOM 121.7	SOUTH 122.25	Bearings are Magnetic Elevations in FEET AMSL
---------------------	---	---------------------------------------	-----------------	---------------------	-----------------	--

NOT TO SCALE



**ARRIVAL: WOODY ONE VICTOR**

**RWY 01L:**

- From WOODY track 084° to NUSBU  
**Cross** NUSBU AT or BLW FL120
- Track 084° to NODUG  
**Cross** NODUG BTN 7000ft and 9000ft
- Turn RIGHT, track 104° to RUKNO
- Track 104°, EXPECT radar vectors to final

**RWY 19R:**

- From WOODY track 068° to ATVON  
**Cross** ATVON BTN 8000ft and 9000ft
- Track 067° to TEGIL
- Track 067° to PAMGO  
**Cross** PAMGO BTN 5000ft and 7000ft
- Track 067°, EXPECT radar vectors to final

**COMMUNICATIONS FAILURE: PROCEDURE IN IMC  
IF ABLE CTC BN ATC ON TEL: (07) 3866-3694**

- Squawk 7600, comply with vertical navigation requirements, but not below MSA.
- Track via the latest STAR clearance to the nominated runway, then fly the most suitable approach in accordance with ERSA EMERG Section 1.5.

Changes: WOODY-NUSBU TRACK, NUSBU-NODUG TRACK, ATVON-TEGIL TRACK, Editorial.

BBNSR33-171